



ANDERSON HILLS CHURCH

SPACIAL STORYTELLING | Construction Documentation
04.11.2025

Updated 05.28.2025

Anderson Hills Church
Anderson Hills Church - 7515 Forest Rd, Cincinnati, OH 45255

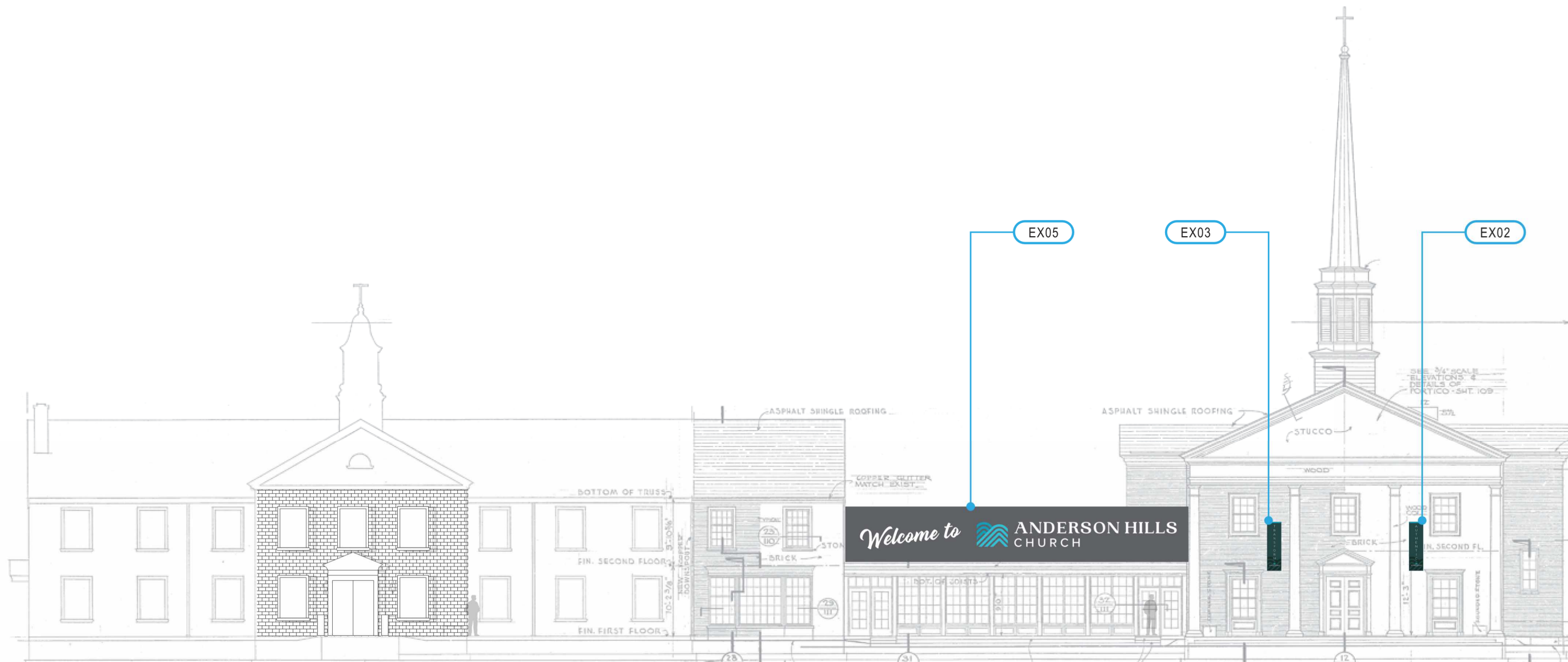
COVER

DATE
11.21.2024

CONSTRUCTION DOCUMENTATION

Anderson Hills Church
7514 Forest Rd - Cincinnati, OH 45255

COVER



1 EX02-EX04, EX06: FRONT VIEW

MATERIALS: SEE FOLLOWING PAGES

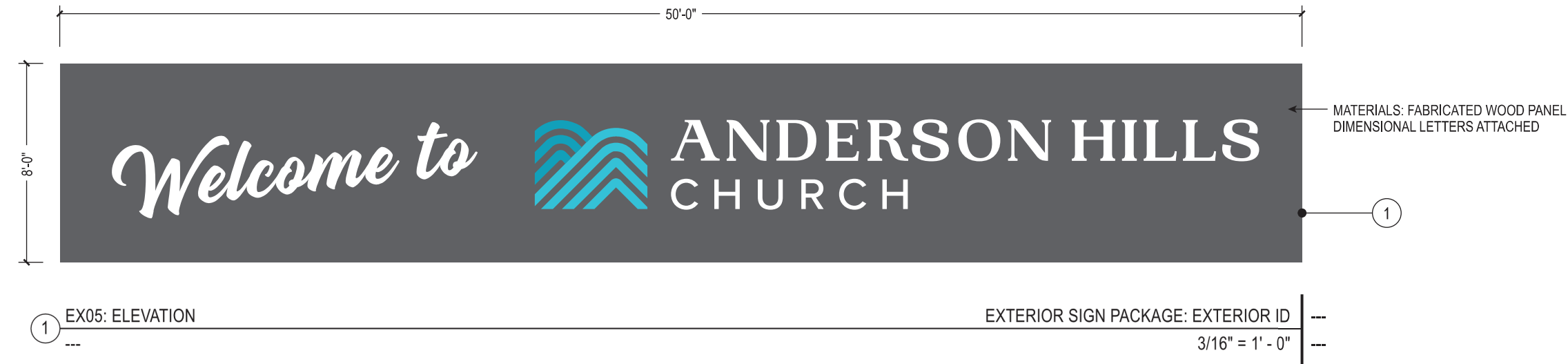
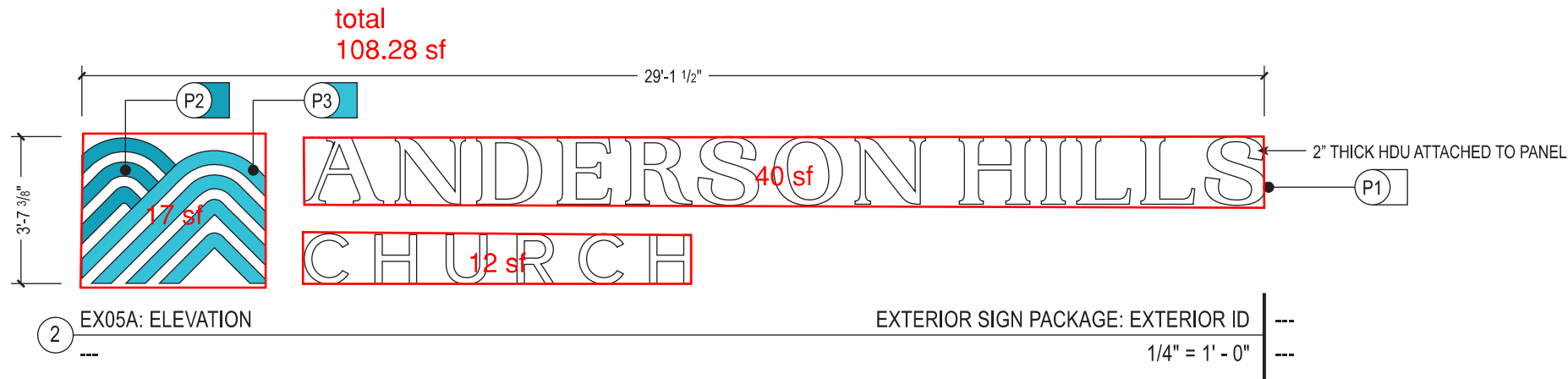
VERIFY MEASUREMENTS PRIOR TO FABRICATION/INSTALLATION

EXTERIOR SIGN PACKAGE: WALL GRAPHIC/ID SIGN ---

1/16" = 1' - 0" ---



ORIGINAL DRAWING ON 11" X 17" SHEET



GENERAL NOTES

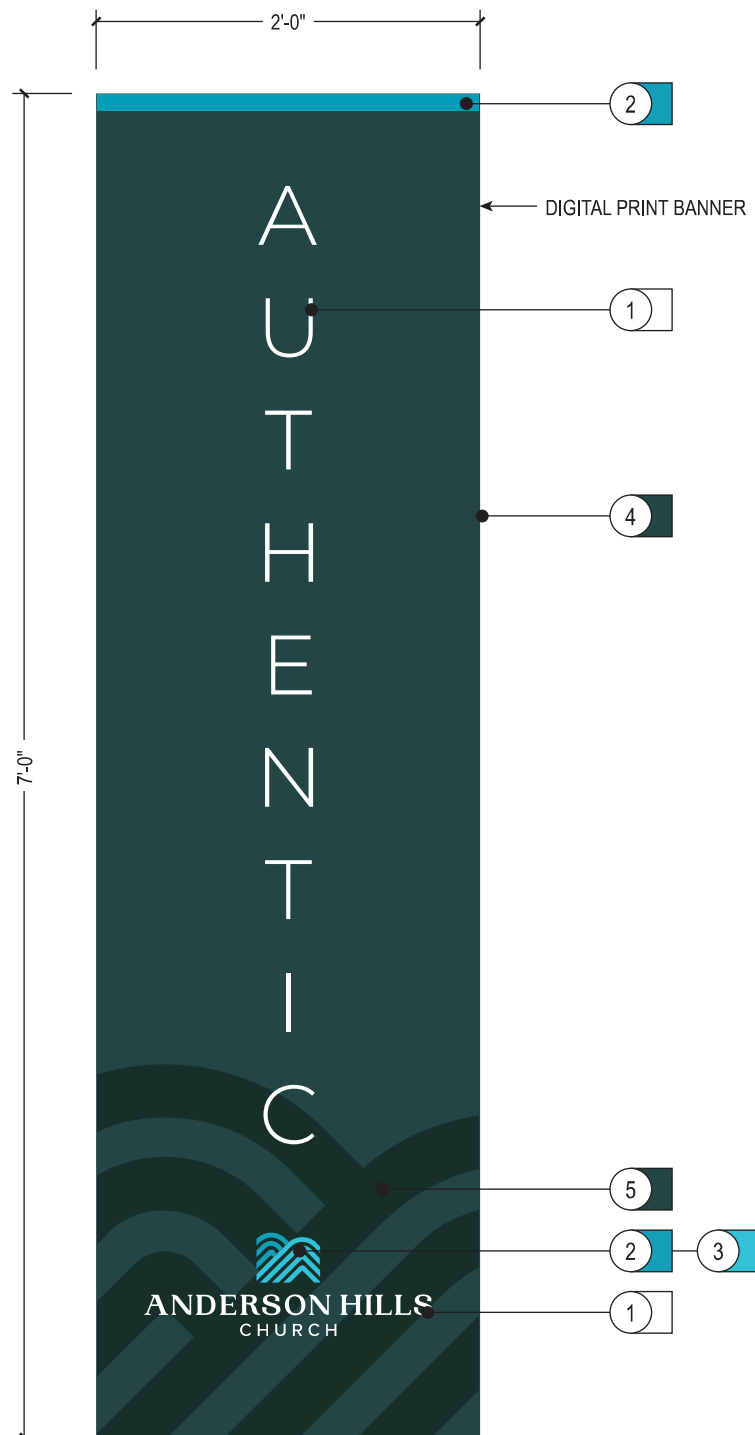
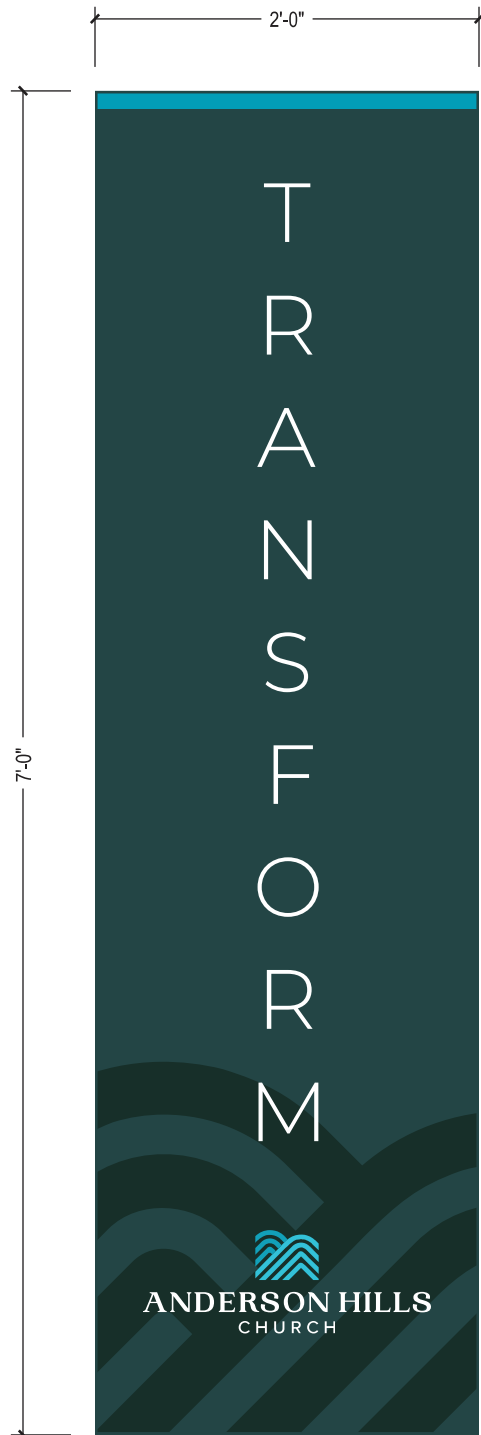
1. PIN-MOUNTED PAINTED HDU LETTERS/-GRAPHICS ON PROPOSED WOOD STRUCTUR
2. SIGN VENDOR TO SUBMIT SAMPLE FOR CREATIVE APPROVAL PRIOR TO FABRI-CATION AND INSTALLATION.
3. SIGN VENDOR TO VERIFY FIELD CONDI-TIONS AND MEASUREMENTS.

COLOR SCHEDULE

- P1— MP04762 White Lace, Eggshell
- P2— MP02896 Camille Blue, Eggshell
- P3— MP023392 Lake Placid, Eggshell

ORIGINAL DRAWING ON 11" X 17" SHEET

total
28.0 sf



GENERAL NOTES

1. HIGH-RESOLUTION DIGITAL PRINT ON DURBLE EXTERIOR BANNER MATERIAL
2. SIGN VENDOR TO FABRICATE OR SOURCE ATTACHMENT TO BUILDING
3. SIGN VENDOR TO SUBMIT SAMPLE FOR CREATIVE APPROVAL PRIOR TO FABRI-CATION AND INSTALLATION.
4. SIGN VENDOR TO VERIFY FIELD CONDI-TIONS AND MEASUREMENTS.

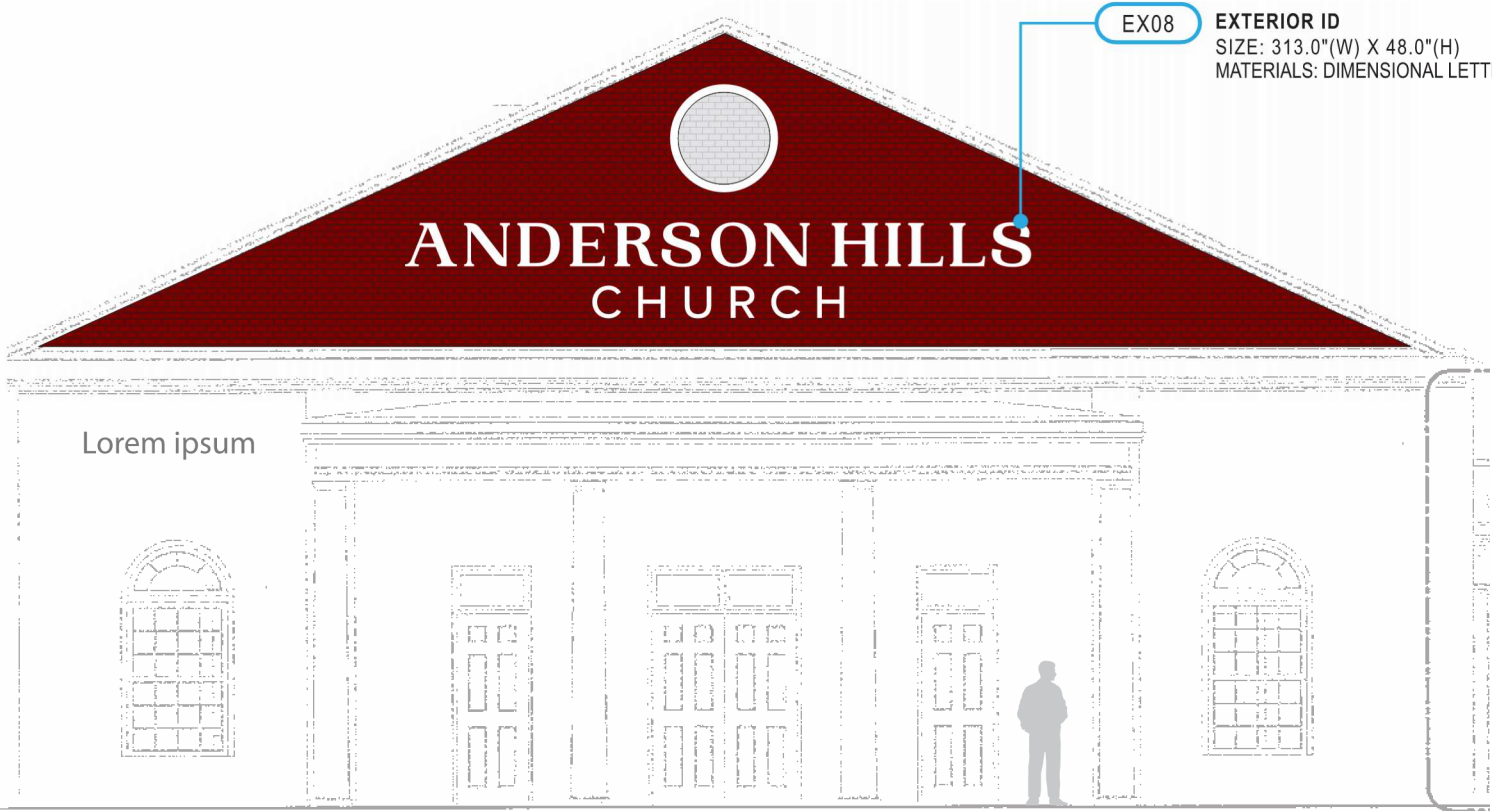
COLOR SCHEDULE

- P1 — PMS WHITE C, Matte
- P2 — PMS 6129C, Matte
- P3 — PMS 630C, Matte
- 4 — PMS 7546C, Matte
- 5 — PMS 5635C, Matte

1 EX02/3: ELEVATION

EXTERIOR SIGN PACKAGE: PLACEMAKING

1" = 1' - 0"



EX08 EXTERIOR ID
SIZE: 313.0"(W) X 48.0"(H)
MATERIALS: DIMENSIONAL LETTERS

1 EX08: FRONT VIEW
MATERIALS: SEE FOLLOWING PAGES
VERIFY MEASUREMENTS PRIOR TO FABRICATION/INSTALLATION

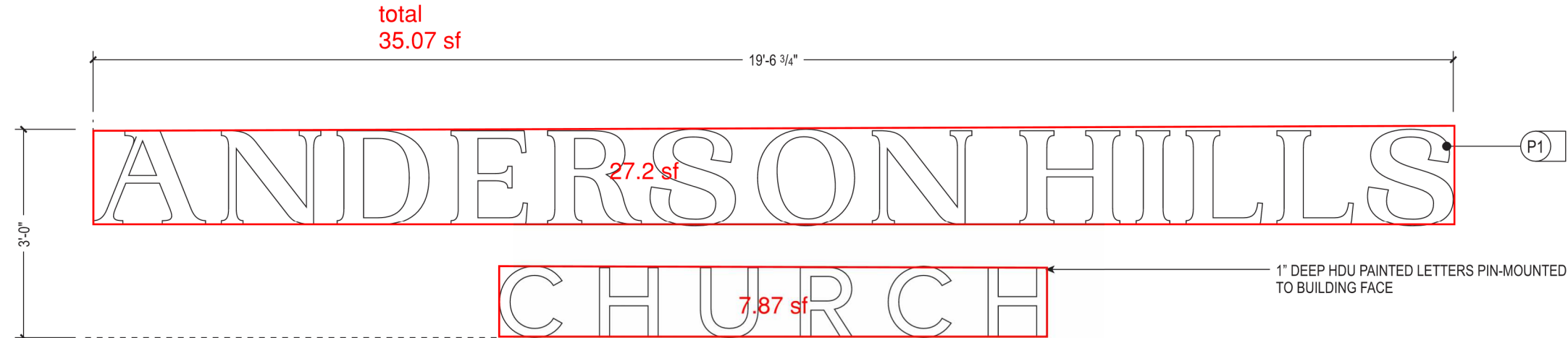
EXTERIOR SIGN PACKAGE: EXTERIOR ID
1/8" = 1' - 0"

GENERAL NOTES

- 1. PIN-MOUNTED PAINTED HDU LETTERS/-GRAPHICS ON PROPOSED WOOD STRUCTUR
- 2. SIGN VENDOR TO SUBMIT SAMPLE FOR CREATIVE APPROVAL PRIOR TO FABRI-CATION AND INSTALLATION.
- 3. SIGN VENDOR TO VERIFY FIELD CONDI-TIONS AND MEASUREMENTS.

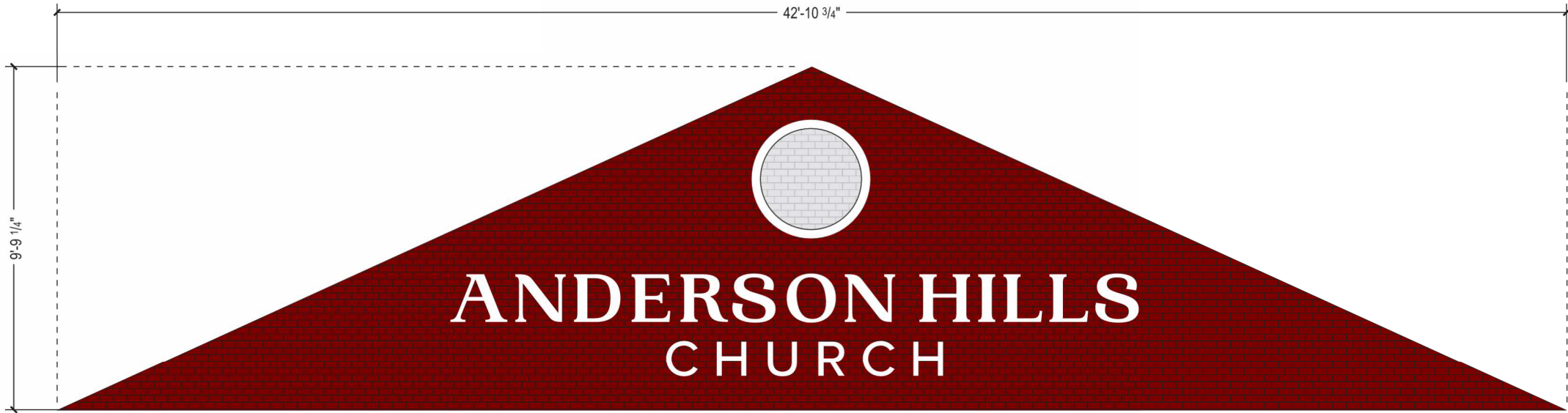
COLOR SCHEDULE

P1 — MP04762 White Lace, Eggshell



1 EX08: DETAIL
MATERIALS: DIMENSIONAL GRPHICS
VERIFY MEASUREMENTS PRIOR TO FABRICATION/INSTALLATION

EXTERIOR SIGN PACKAGE: EXTERIOR ID ---
1/2" = 1' - 0" ---



2 EX08: ELEVATION
MATERIALS: DIMENSIONAL GRPHICS
VERIFY MEASUREMENTS PRIOR TO FABRICATION/INSTALLATION

EXTERIOR SIGN PACKAGE: EXTERIOR ID ---
1/4" = 1' - 0" ---

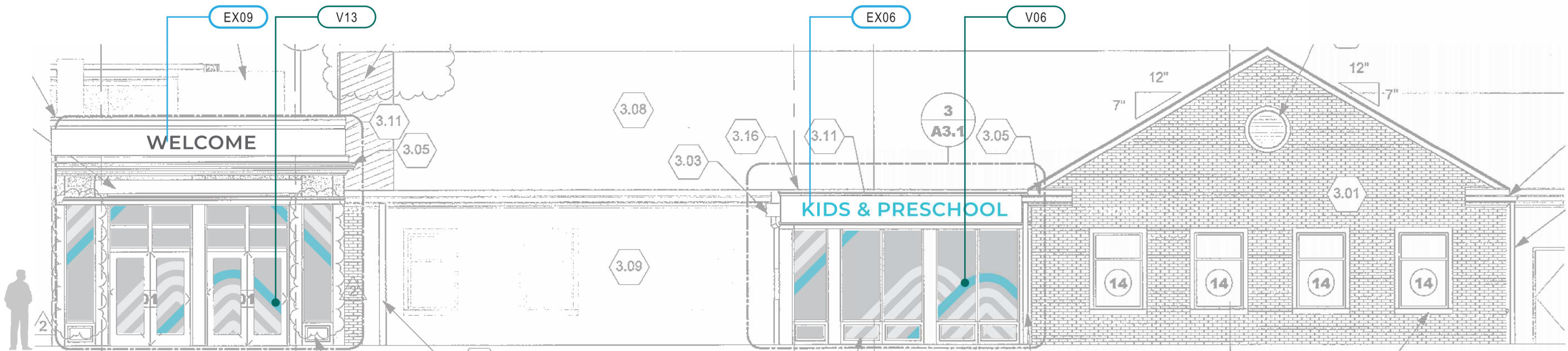
EX08: EXTERIOR ID - DETAIL
EXTERIOR SIGN PACKAGE

DATE
11.21.2024

CONSTRUCTION DOCUMENTATION

Anderson Hills Church
7514 Forest Rd - Cincinnati, OH 45255

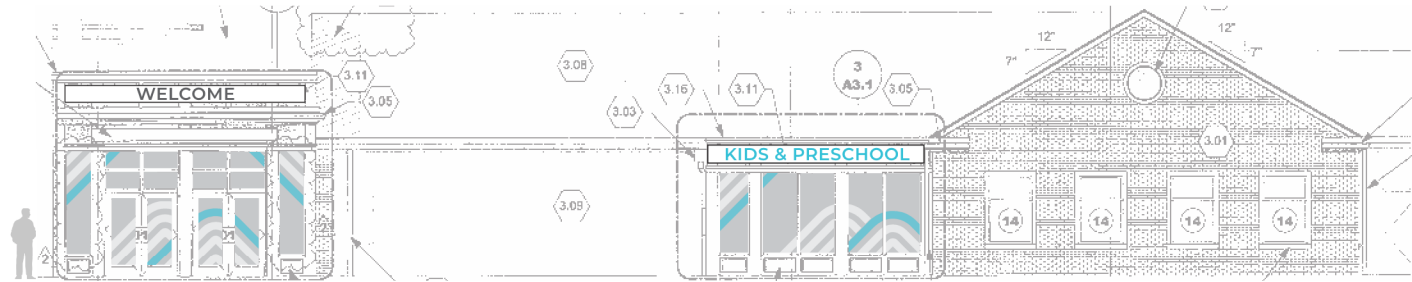
EX08.1



1 EX09/EX06/V06: FRONT VIEW
MATERIALS: SEE FOLLOWING PAGES
VERIFY MEASUREMENTS PRIOR TO FABRICATION/INSTALLATION

EXTERIOR SIGN PACKAGE: EXTERIOR ID ---
DATE 11.21.2024 1/8" = 1' - 0" ---





1 V06: OVERALL ELEVATION
VERIFY MEASUREMENTS PRIOR TO FABRICATION/INSTALLATION

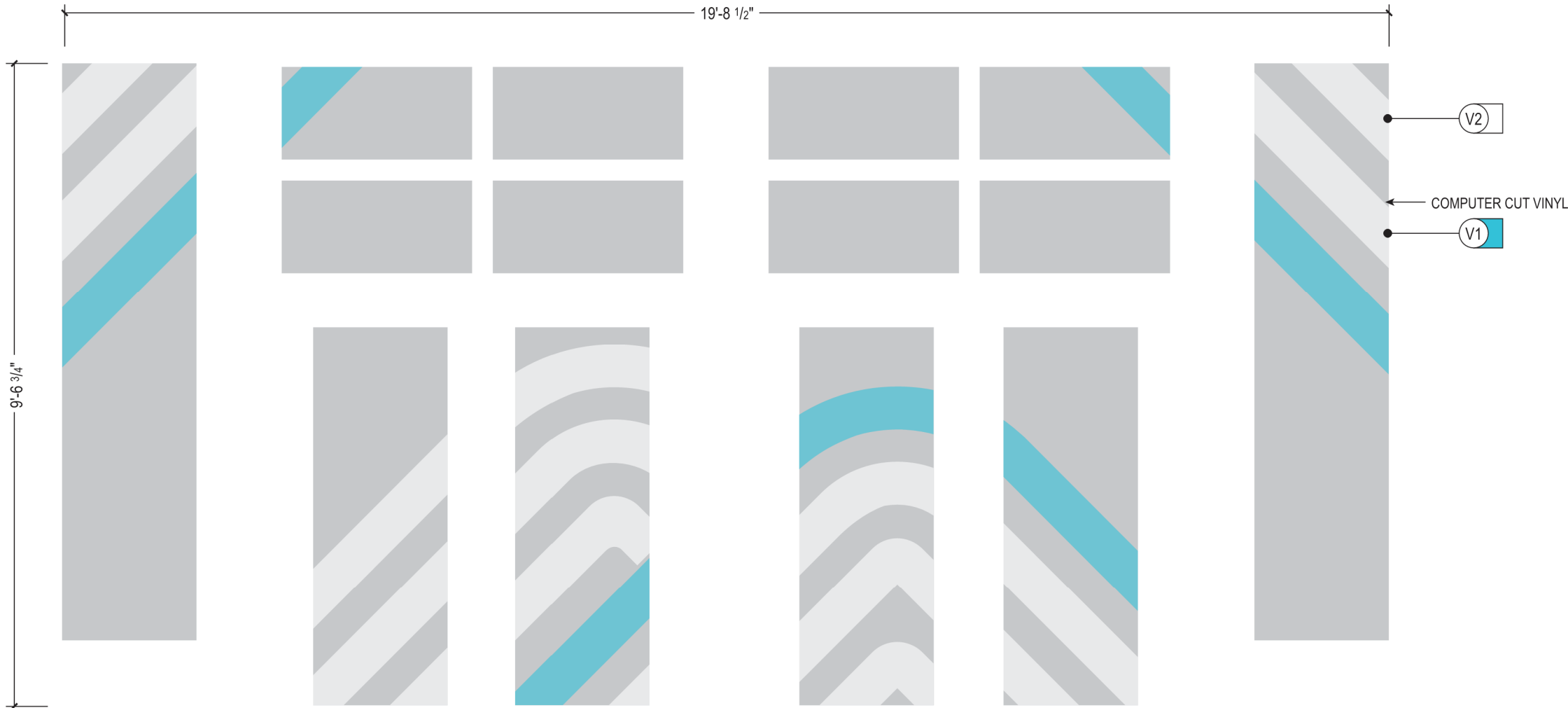
EXTERIOR SIGN PACKAGE
1/16" = 1' - 0"

GENERAL NOTES

- 1. PIN-MOUNTED PAINTED HDU LETTERS/-GRAPHICS ON PROPOSED WOOD STRUCTURE
- 2. COMPUTER CUT VINYL GRAPHICS APPLIED TO WINDOW AREA - TRMMED ON INSTLLATION
- 3. SIGN VENDOR TO SUBMIT SAMPLE FOR CREATIVE APPROVAL PRIOR TO FABRI-CATION AND INSTALLATION.
- 4. SIGN VENDOR TO VERIFY FIELD CONDI-TIONS AND MEASUREMENTS.

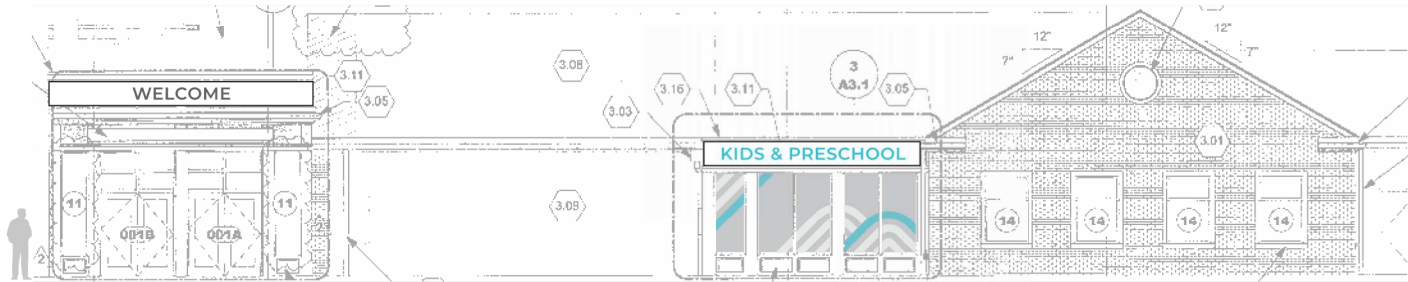
COLOR SCHEDULE

- V1 - 3M 7725-327 - Frosted Blue Mist
- V2 - 3M 7725-324 - Frosted Crystal



2 V13: ELEVATION
MATERIALS: APPLIED VINYL GRAPHICS
VERIFY MEASUREMENTS PRIOR TO FABRICATION/INSTALLATION

EXTERIOR SIGN PACKAGE: VINYL GRAPHICS
1/2" = 1' - 0"



1 V06: OVERALL ELEVATION
VERIFY MEASUREMENTS PRIOR TO FABRICATION/INSTALLATION

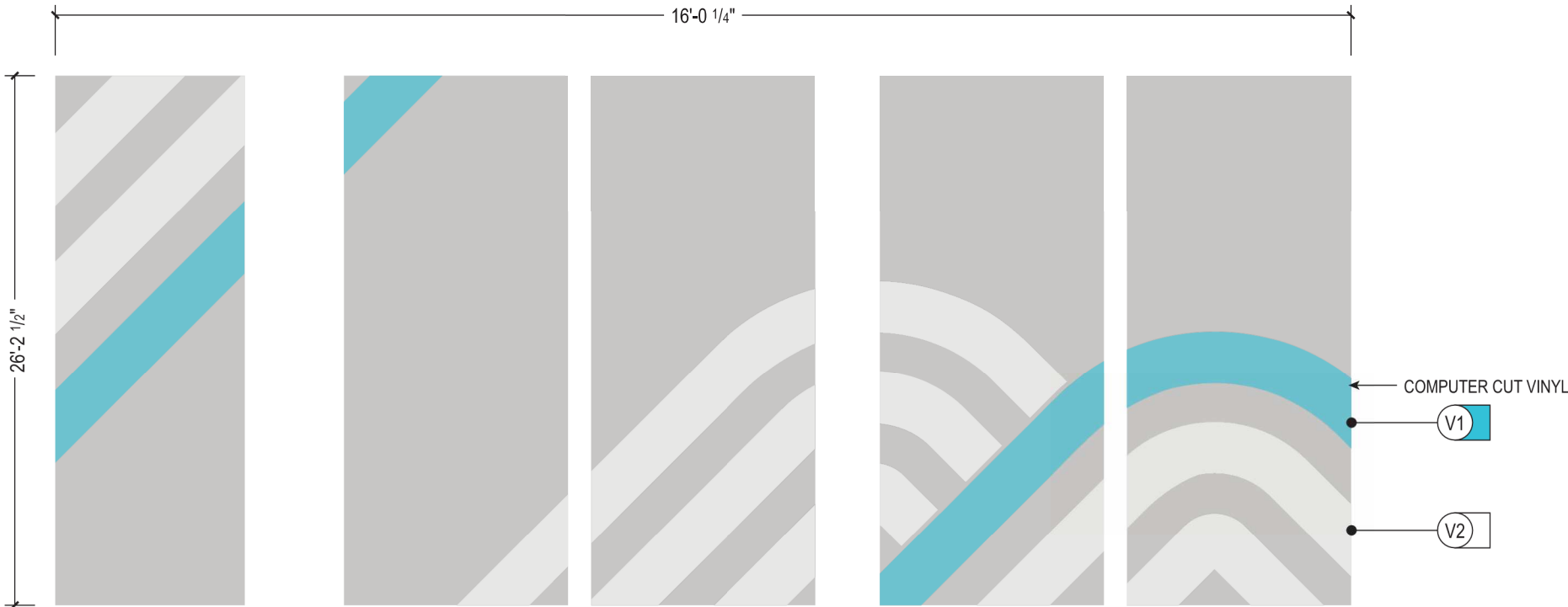
EXTERIOR SIGN PACKAGE
1/16" = 1' - 0"

GENERAL NOTES

1. PIN-MOUNTED PAINTED HDU LETTERS/-GRAPHICS ON PROPOSED WOOD STRUCTURE
2. COMPUTER CUT VINYL GRAPHICS APPLIED TO WINDOW AREA - TRMMED ON INSTLLATION
3. SIGN VENDOR TO SUBMIT SAMPLE FOR CREATIVE APPROVAL PRIOR TO FABRI-CATION AND INSTALLATION.
4. SIGN VENDOR TO VERIFY FIELD CONDI-TIONS AND MEASUREMENTS.

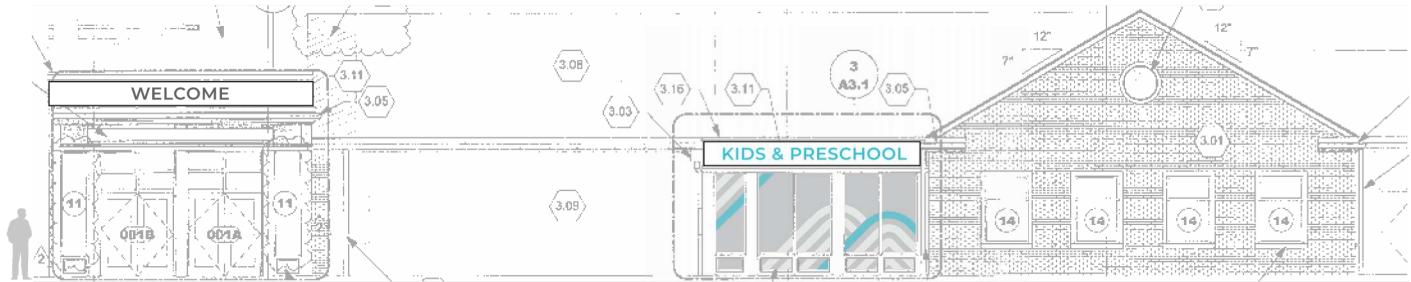
COLOR SCHEDULE

- V1 - 3M 7725-327 - Frosted Blue Mist
- V2 - 3M 7725-324 - Frosted Crystal



2 V06: ELEVATION
MATERIALS: APPLIED VINYL GRAPHICS
VERIFY MEASUREMENTS PRIOR TO FABRICATION/INSTALLATION

EXTERIOR SIGN PACKAGE: VINYL GRAPHICS
1/2" = 1' - 0"



1

V09: OVERALL ELEVATION
VERIFY MEASUREMENTS PRIOR TO FABRICATION/INSTALLATION

EXTERIOR SIGN PACKAGE
1/16" = 1' - 0"

total
8.22 sf



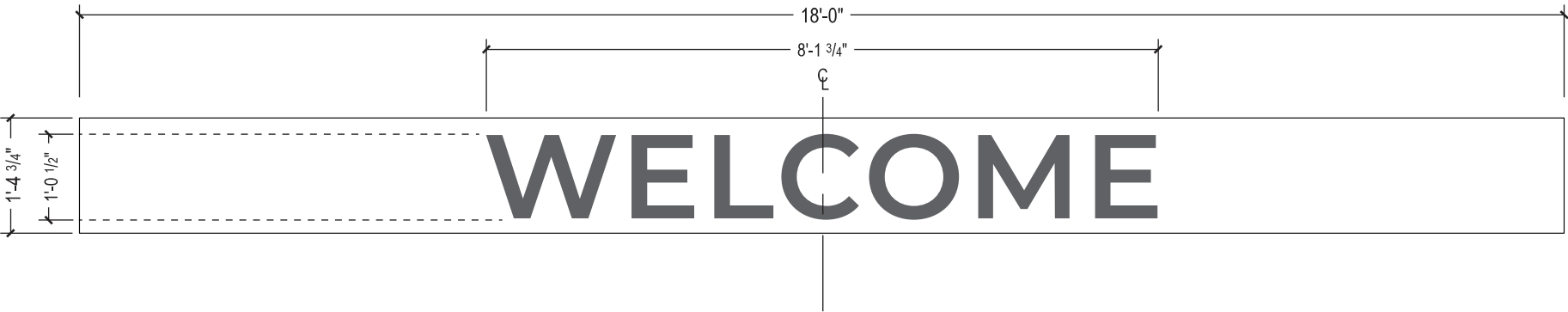
2

V09: DETAIL ELEVATION
VERIFY MEASUREMENTS PRIOR TO FABRICATION/INSTALLATION

EXTERIOR SIGN PACKAGE
1" = 1' - 0"

3

V06: SIDE VIEW
1" = 1' - 0"



4

EX09: ELEVATION
MATERIALS: SEE FOLLOWING PAGES
VERIFY MEASUREMENTS PRIOR TO FABRICATION/INSTALLATION

EXTERIOR SIGN PACKAGE: EXTERIOR ID
1/2" = 1' - 0"

GENERAL NOTES

- 1. PIN-MOUNTED PAINTED HDU LETTERS/-GRAPHICS ON PROPOSED WOOD STRUCTUR
- 2. SIGN VENDOR TO SUBMIT SAMPLE FOR CREATIVE APPROVAL PRIOR TO FABRICATION AND INSTALLATION.
- 3. SIGN VENDOR TO VERIFY FIELD CONDITIONS AND MEASUREMENTS.

COLOR SCHEDULE

P4 — MP07026 Story Grey, Eggshell



Technical drawing of a sign elevation. The sign features the text "KIDS & PRESCHOOL" in large, blue, outlined letters. Dimensions include a total width of 15'-3 1/2" and a height of 1'-0 1/8". A red rectangular area highlights the text, with a callout "3.9 sf". A callout "P3" points to a small square on the right. A note indicates "1" DEEP HDU LETTERS MOUNTED TO FACE".

2 EX06: DETAIL ELEVATION

VERIFY MEASUREMENTS PRIOR TO FABRICATION/INSTALLATION

EXTERIOR SIGN PACKAGE

1" = 1' - 0"

3 V06: SIDE VIEW

1" = 1' - 0"

18'-0 3/16"

15'-3 1/8"

6 PMS 7507C, Semi-gloss

2'-0"

1'-0 1/8"

KIDS & PRESCHOOL

4 EX06: ELEVATION

MATERIALS: SEE FOLLOWING PAGES

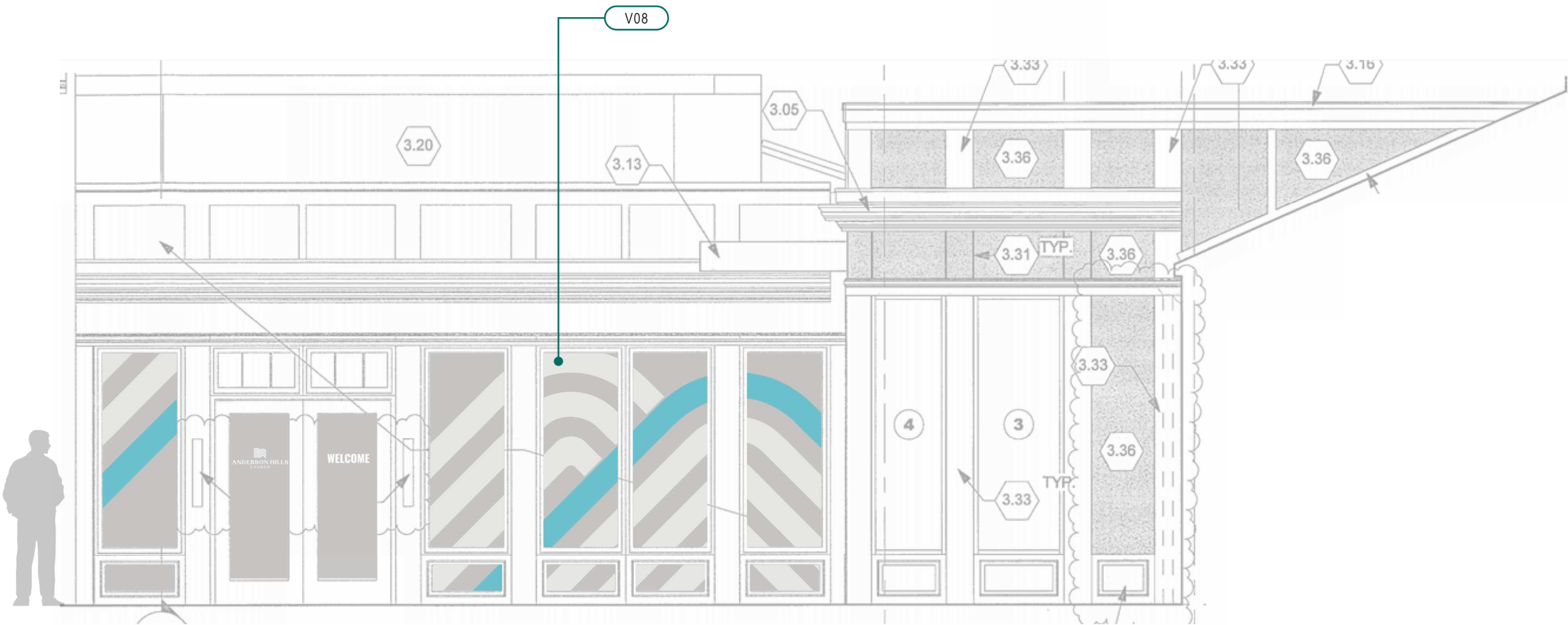
VERIFY MEASUREMENTS PRIOR TO FABRICATION/INSTALLATION

EXTERIOR SIGN PACKAGE: EXTERIOR ID

1/2" = 1' - 0"

1. PIN-MOUNTED PAINTED HDU LETTERS/-GRAPHICS ON PROPOSED WOOD STRUCTUR
2. SIGN VENDOR TO SUBMIT SAMPLE FOR CREATIVE APPROVAL PRIOR TO FABRI-CATION AND INSTALLATION.
3. SIGN VENDOR TO VERIFY FIELD CONDI-TIONS AND MEASUREMENTS.

P3—MP023392 Lake Placid, Eggshell



1 V08: FRONT VIEW

MATERIALS: SEE FOLLOWING PAGES

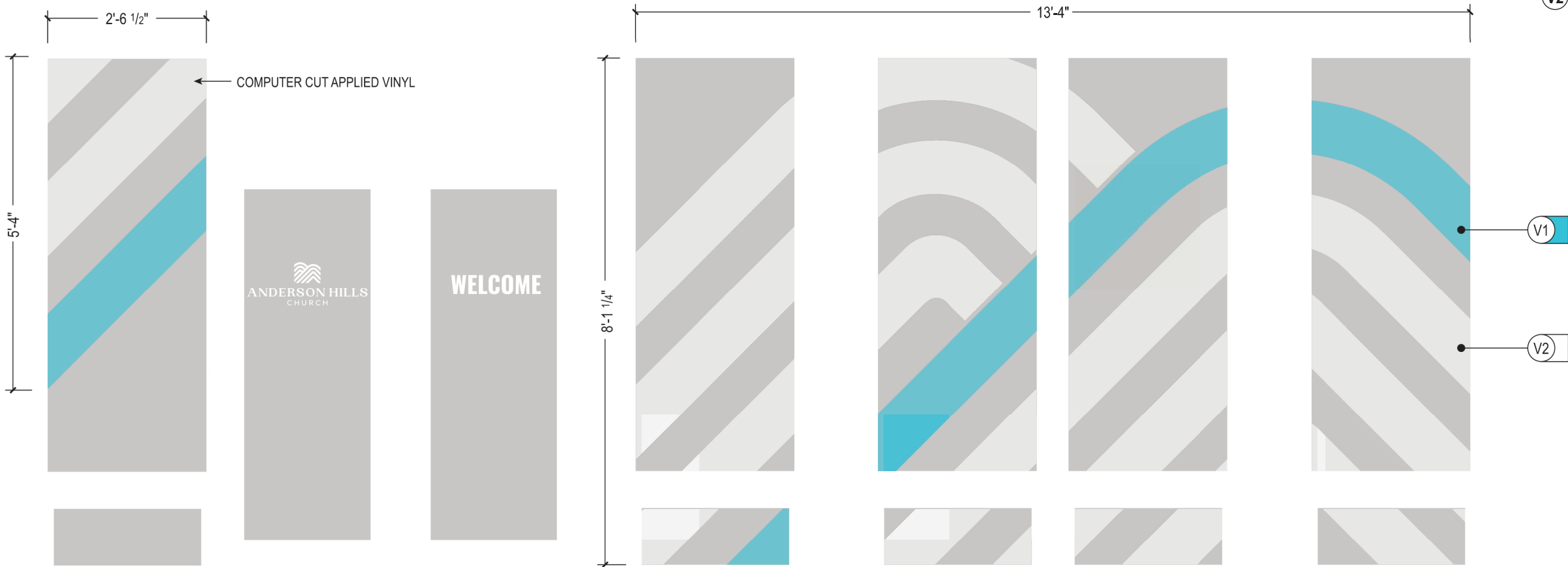
VERIFY MEASUREMENTS PRIOR TO FABRICATION/INSTALLATION

EXTERIOR SIGN PACKAGE: VINYL GRAPHICS

1/4" = 1' - 0"



ORIGINAL DRAWING ON 11" X 17" SHEET



GENERAL NOTES

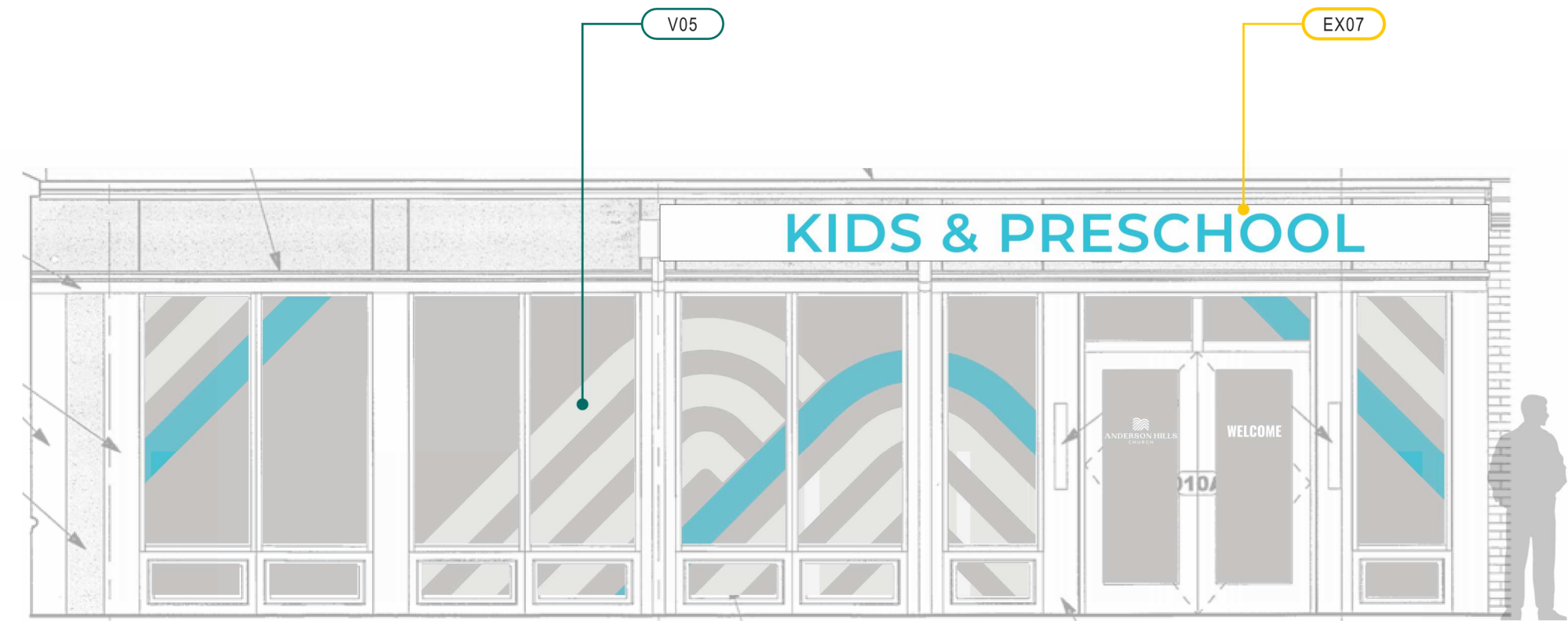
1. COMPUTER CUT VINYL GRAPHICS APPLIED TO WINDOW AREA - TRMMED ON INSTLLATION
2. SIGN VENDOR TO SUBMIT SAMPLE FOR CREATIVE APPROVAL PRIOR TO FABRI-CATION AND INSTALLATION.
3. SIGN VENDOR TO VERIFY FIELD CONDI-TIONS AND MEASUREMENTS.

COLOR SCHEDULE

- V1 - 3M 7725-327 - Frosted Blue Mist
- V2 - 3M 7725-324 - Frosted Crystal

1 V08: ELEVATION
MATERIALS: APPLIED VINYL GRAPHICS
VERIFY MEASUREMENTS PRIOR TO FABRICATION/INSTALLATION

EXTERIOR SIGN PACKAGE: VINYL GRAPHICS ---
1/2" = 1' - 0" ---



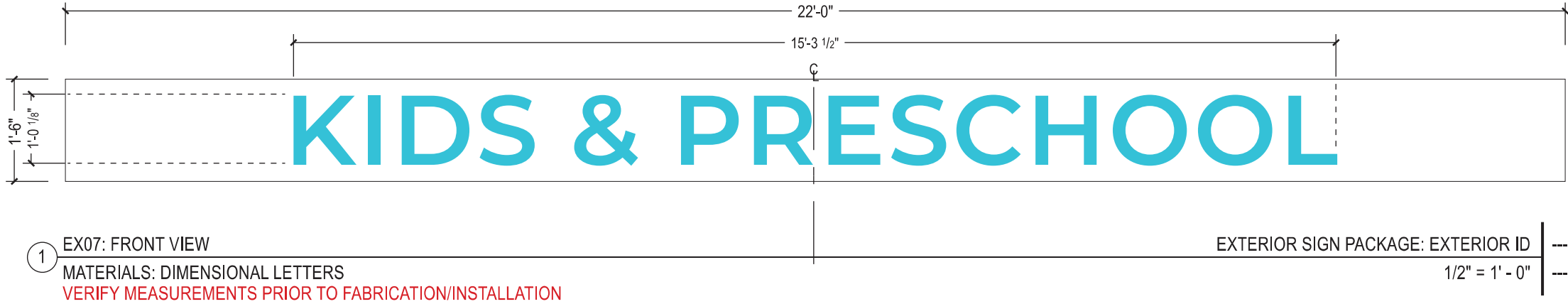
1 V05/EX07: FRONT VIEW
MATERIALS: SEE FOLLOWING PAGES
VERIFY MEASUREMENTS PRIOR TO FABRICATION/INSTALLATION

EXTERIOR SIGN PACKAGE: V05: VINYL GRAPHICS - E103: DIMENSIONAL GRAPHICS ---
1/4" = 1' - 0" ---



ORIGINAL DRAWING ON 11" X 17" SHEET

total
15.0 sf



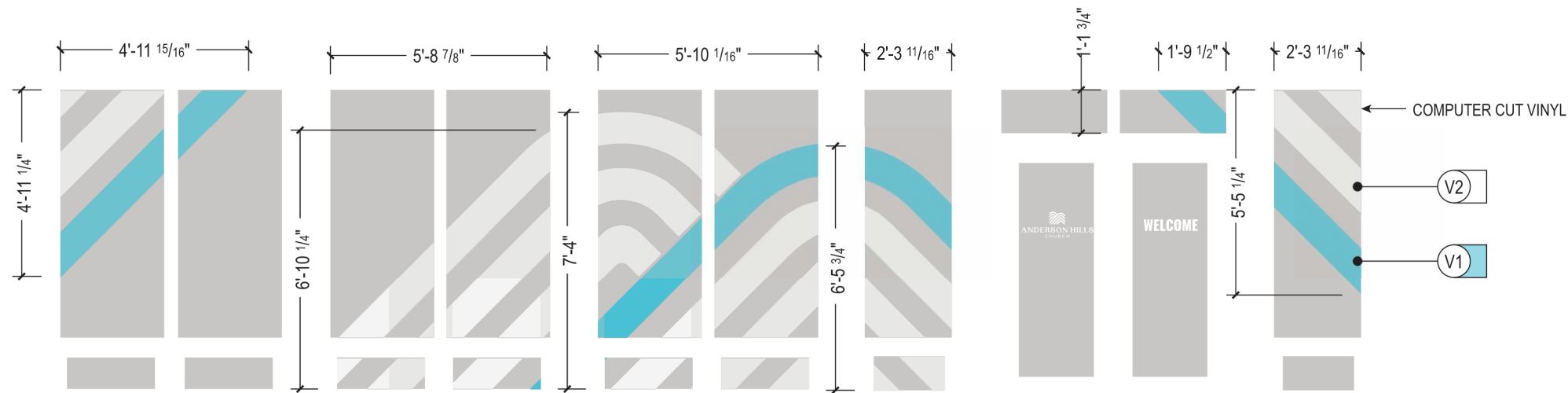
GENERAL NOTES

- PIN-MOUNTED PAINTED HDU LETTERS/-GRAPHICS ON PROPOSED WOOD STRUCTUR
- SIGN VENDOR TO SUBMIT SAMPLE FOR CREATIVE APPROVAL PRIOR TO FABRICATION AND INSTALLATION.
- SIGN VENDOR TO VERIFY FIELD CONDITIONS AND MEASUREMENTS.

COLOR SCHEDULE

P3 - PMS 1495, Semi-gloss

ORIGINAL DRAWING ON 11" X 17" SHEET



1 V05: ELEVATION DETAIL
MATERIALS: APPLIED VINYL GRAPHICS
VERIFY MEASUREMENTS PRIOR TO FABRICATION/INSTALLATION

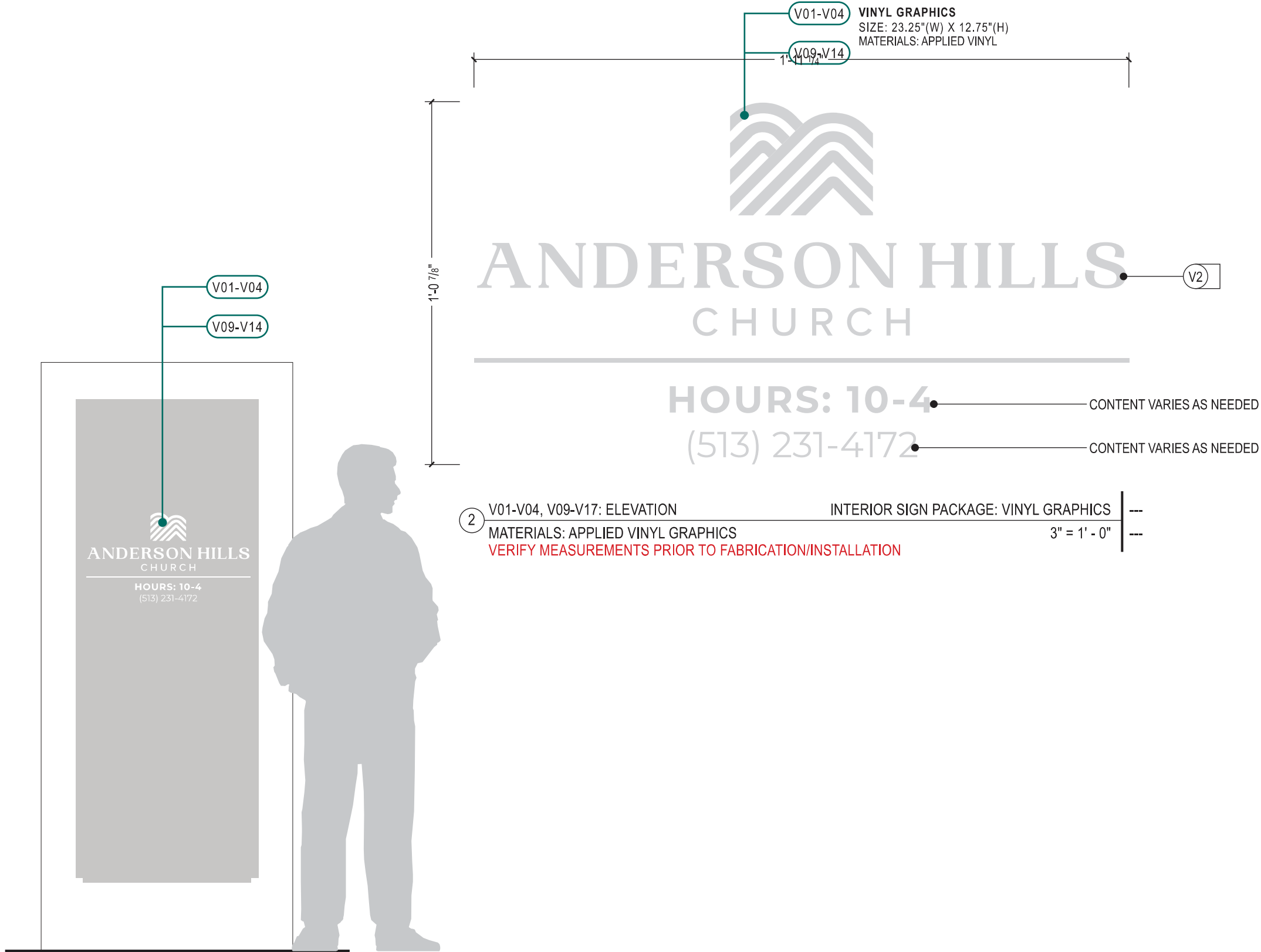
GENERAL NOTES

1. COMPUTER CUT VINYL GRAPHICS APPLIED TO WINDOW AREA - TRMMED ON INSTLLATION
2. SIGN VENDOR TO SUBMIT SAMPLE FOR CREATIVE APPROVAL PRIOR TO FABRI-CATION AND INSTALLATION.
3. SIGN VENDOR TO VERIFY FIELD CONDI-TIONS AND MEASUREMENTS.

COLOR SCHEDULE

- V1 - 3M 7725-327 - Frosted Blue Mist
- V2 - 3M 7725-324 - Frosted Crystal

ORIGINAL DRAWING ON 11" X 17" SHEET



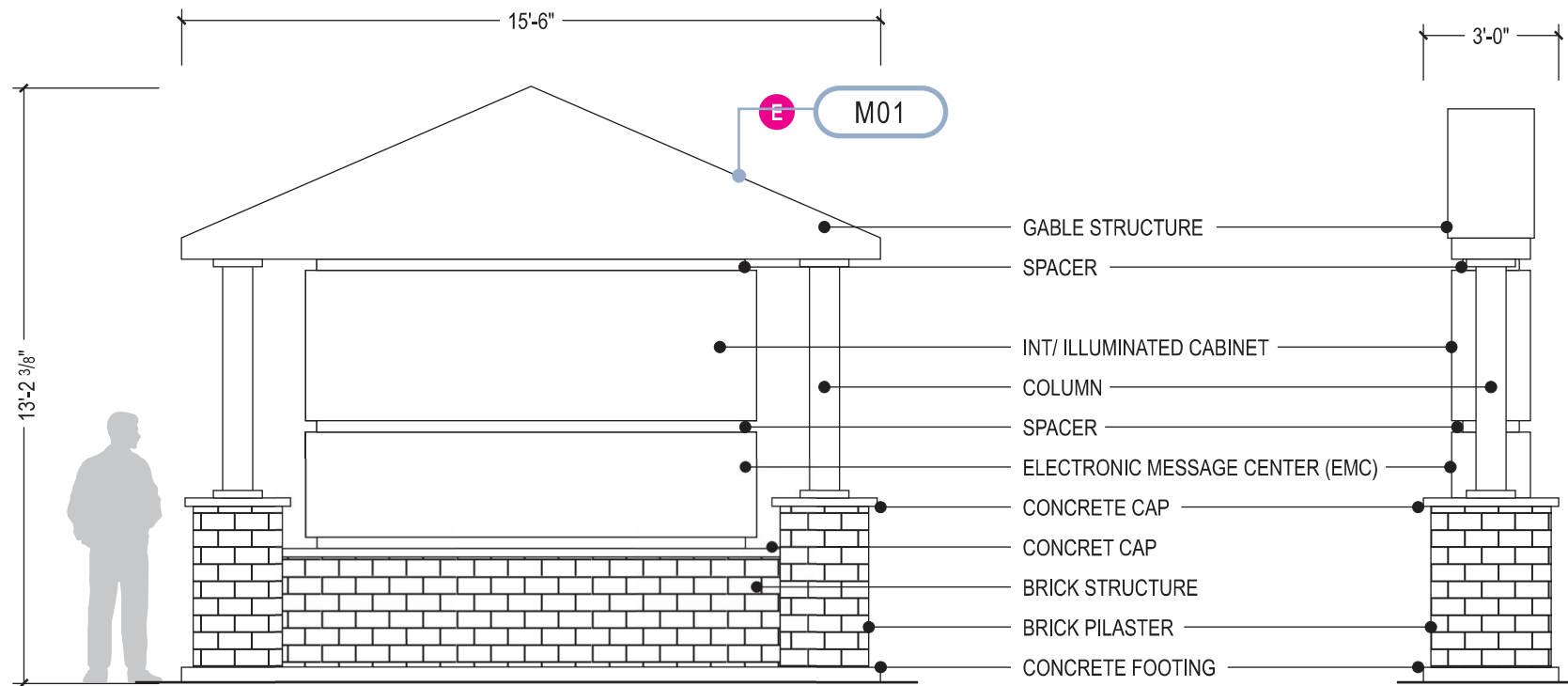
GENERAL NOTES

1. COMPUTER CUT VINYL GRAPHICS APPLIED TO WINDOW AREA - TRMMED ON INSTLLATION
2. SIGN VENDOR TO SUBMIT SAMPLE FOR CREATIVE APPROVAL PRIOR TO FABRI-CATION AND INSTALLATION.
3. SIGN VENDOR TO VERIFY FIELD CONDI-TIONS AND MEASUREMENTS.

COLOR SCHEDULE

V2- 3M 7725-324 - Frosted Crystal

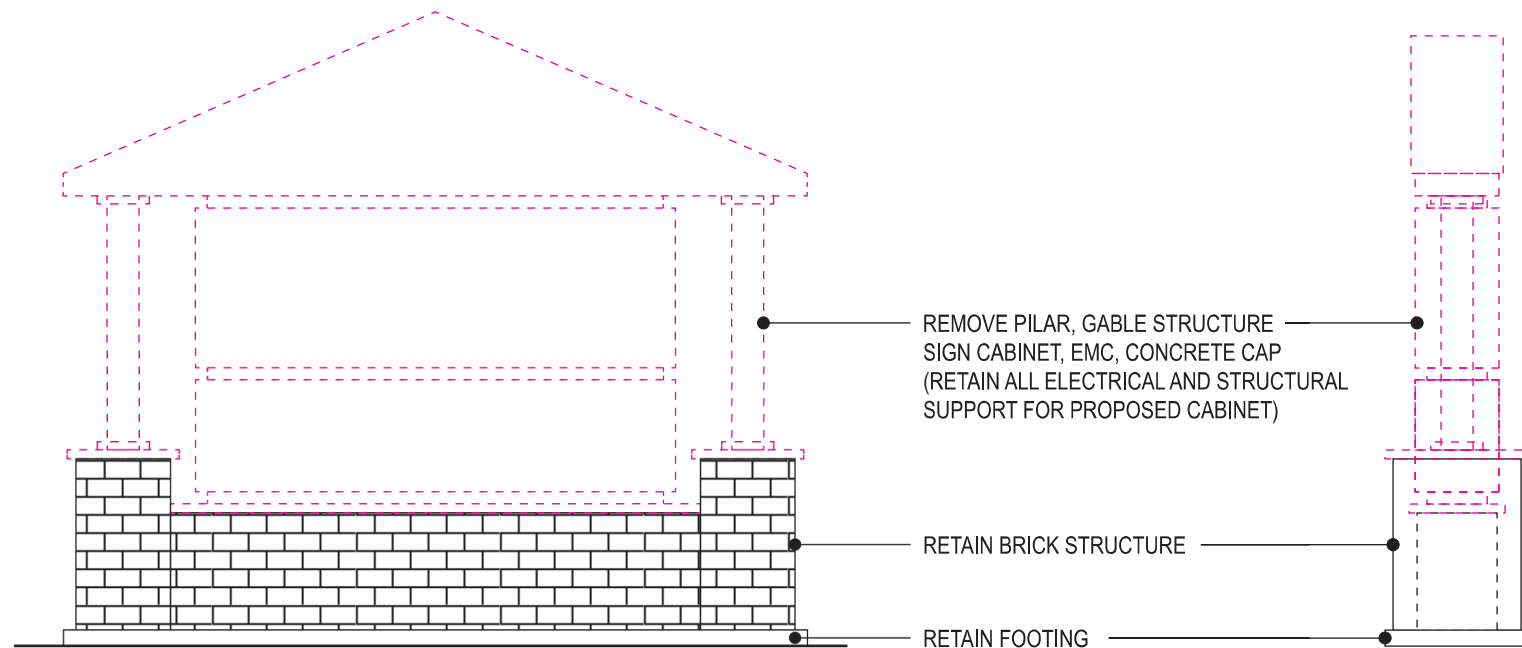
ORIGINAL DRAWING ON 11" X 17" SHEET



1 M01: FRONT VIEW EXISTING MONUMENT
EXISTING DOUBLE SIDED MONUMENT SIGN WITH GABLE STRUCTURE, INT. ILLUMINATED CABINET AND EMC ON BRICK STRUCTURE
1/4" = 1' - 0"
VERIFY MEASUREMENTS PRIOR TO FABRICATION/INSTALLATION

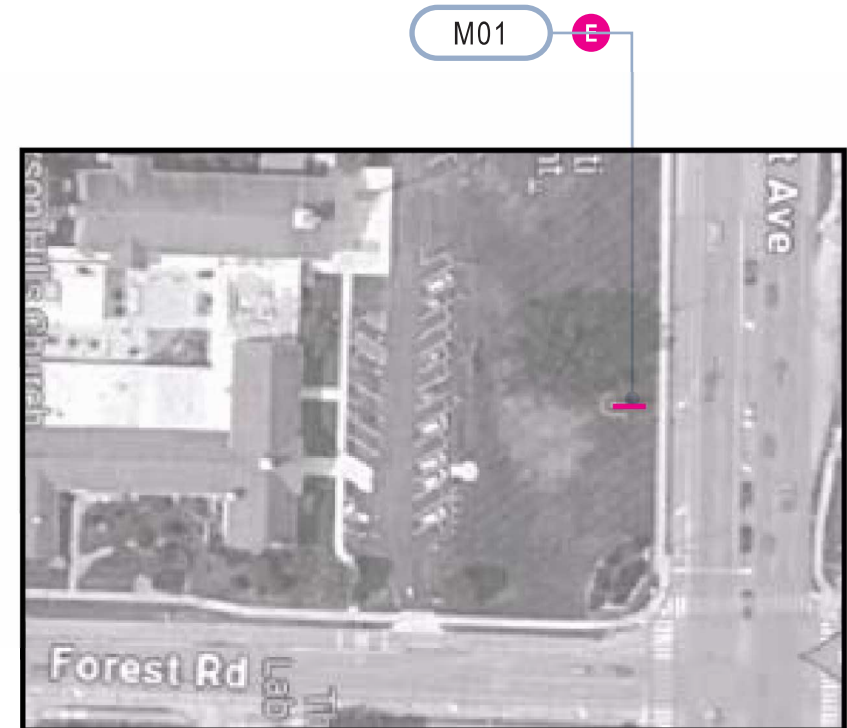
2 M01: SIDE VIEW EXISTING MONUMENT
1/4" = 1' - 0"

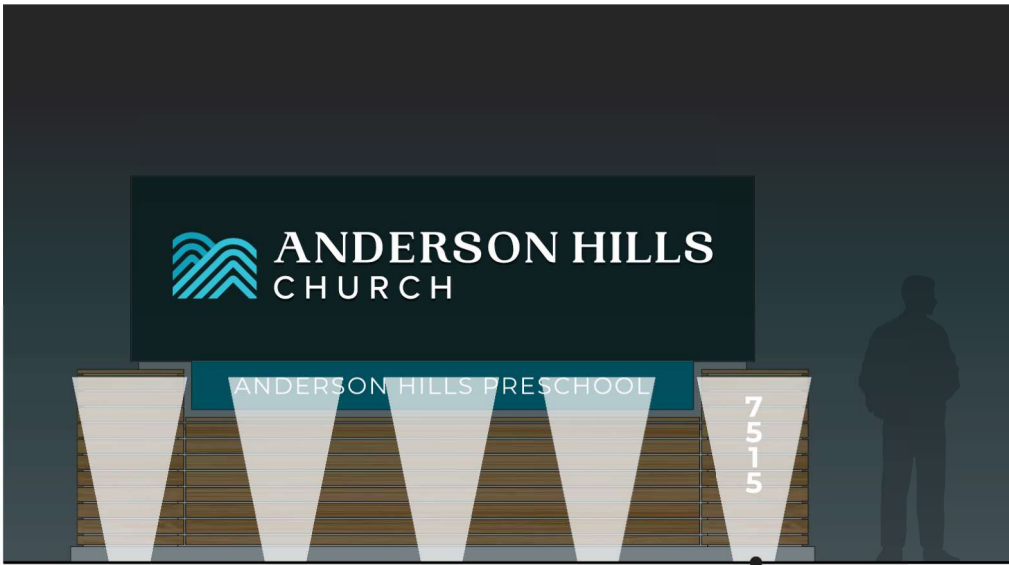
5 M01: PHOTO REFERENCE EXISTING MONUMENT
1/4" = 1' - 0"



3 M01: FRONT VIEW DEMOLITION PLAN
VERIFY MEASUREMENTS PRIOR TO FABRICATION/INSTALLATION
1/4" = 1' - 0"

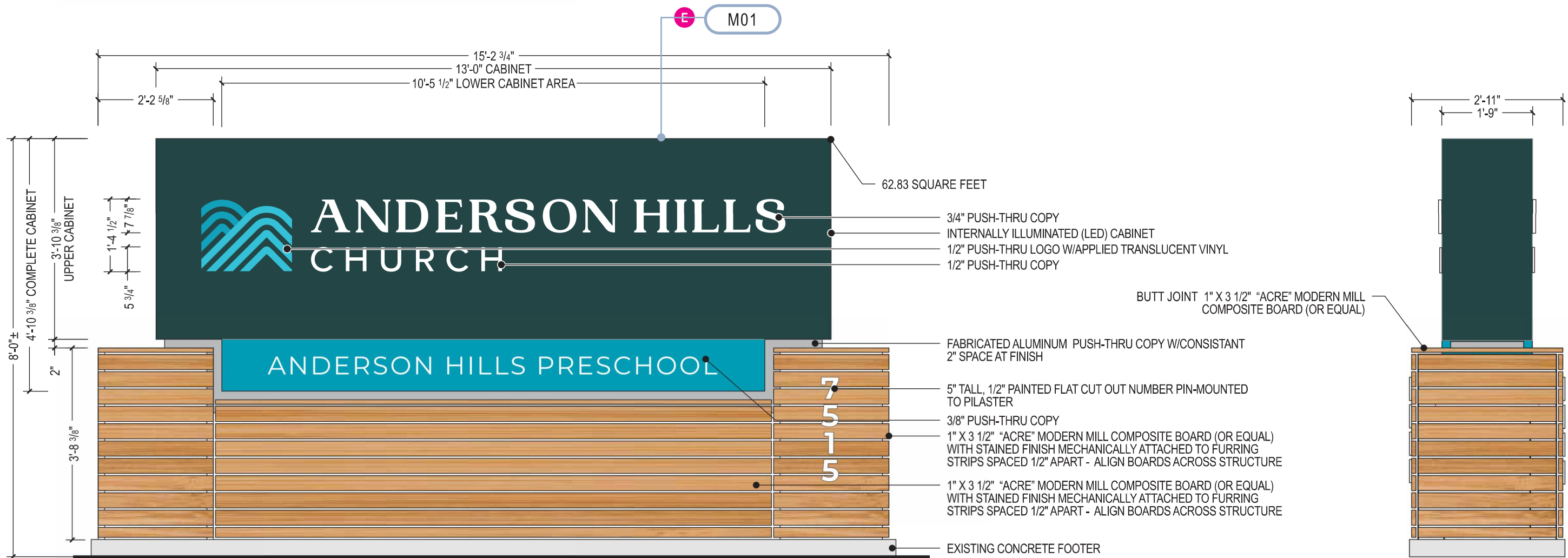
4 M01: SIDE VIEW DEMOLITION PLAN
1/4" = 1' - 0"





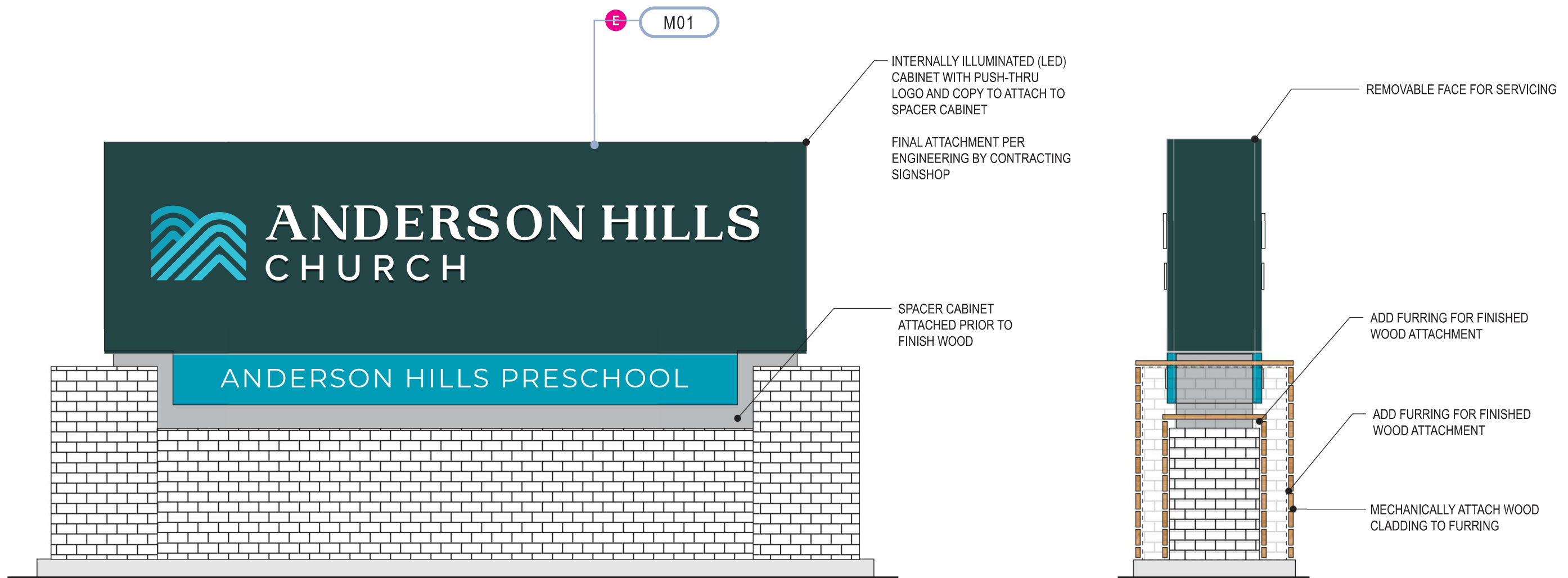
3 M01: ELEVATION - NIGHT RENDERING EXTERIOR SIGN PACKAGE: MAIN MONUMENT
1/4" = 1' - 0"

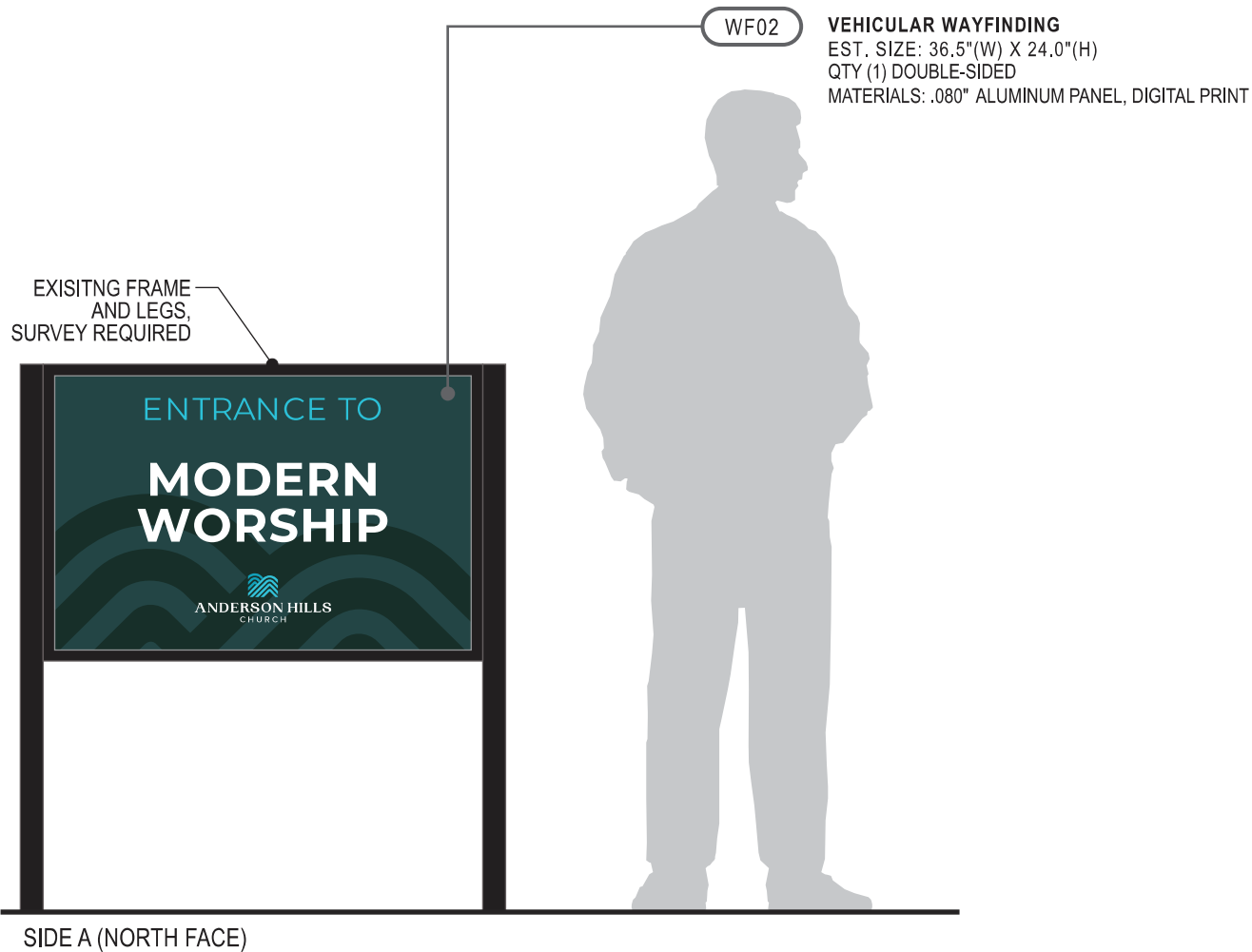
ADD EXTERNAL LIGHTING (BY OTHERS)



1 M01: FRONT VIEW REFURBISH MAIN MONUMENT
REFURBISH EXISTING DOUBLE SIDED MONUMENT SIGN WITH
INT. ILLUMINATED CABINET AND EXTERNAL LIGHTING - COLORS TBD
VERIFY MEASUREMENTS PRIOR TO FABRICATION/INSTALLATION
1/2" = 1' - 0"

2 M01: SIDE VIEW REFURBISH MAIN MONUMENT
1/2" = 1' - 0"





1 WF02: ELEVATION EXTERIOR SIGN PACKAGE: VEHICULAR WAYFINDING ---
MATERIALS: SEE FOLLOWING PAGES 3/4" = 1' - 0" ---
VERIFY MEASUREMENTS PRIOR TO FABRICATION/INSTALLATION

2 WF02: SIDE VIEW EXTERIOR SIGN PACKAGE: VEHICULAR WAYFINDING ---
3/4" = 1' - 0" ---



3 WF02: SIDE A (NORTH FACE) REMOVE - REPLACE AT 90° EXISTING ---
MATERIALS: --- SCALE: NTS ---



4 WF02: SIDE B (SOUTH FACE) REMOVE - REPLACE AT 90° EXISTING ---
MATERIALS: --- SCALE: NTS ---

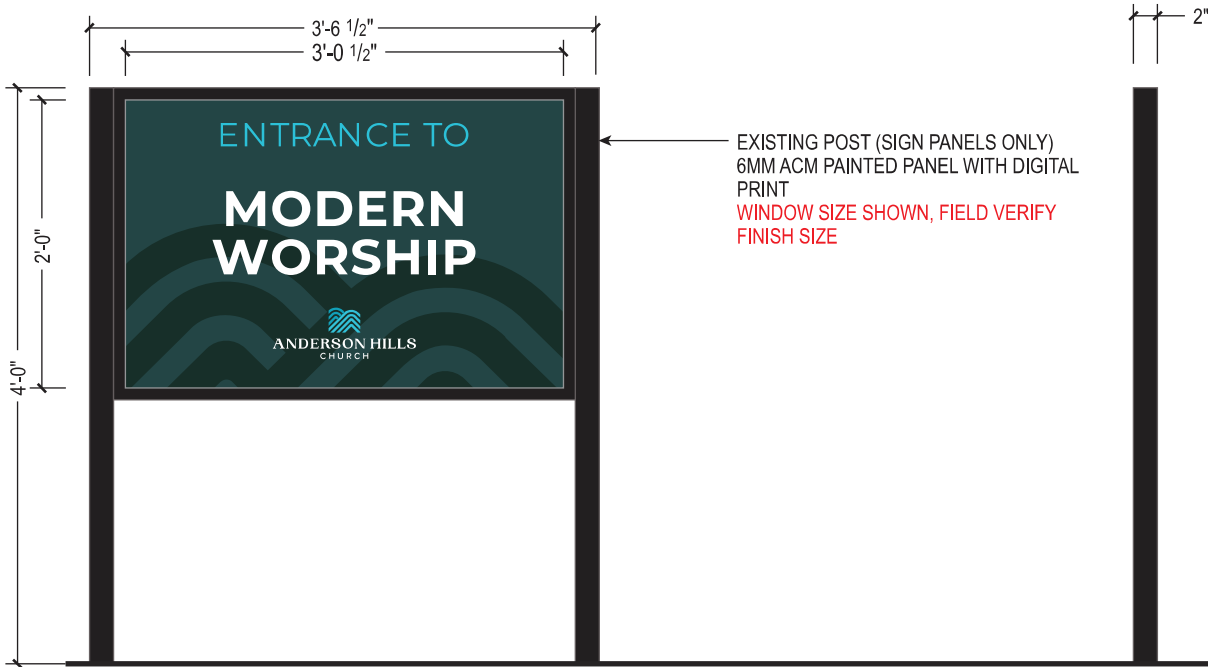


GENERAL NOTES

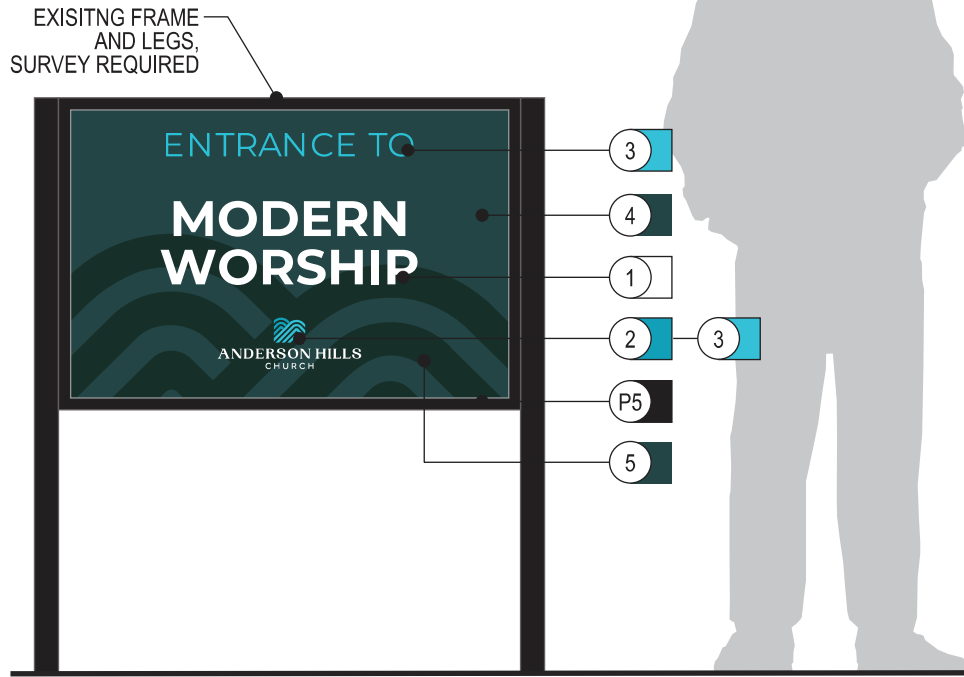
- EXISTING POST AND PANEL STRUCTURE TO BE REFURBISHED WITH NEW PANEL AND DIGITAL PRINT GRAPHICS
- SIGN VENDOR TO SUBMIT SAMPLE FOR CREATIVE APPROVAL PRIOR TO FABRICATION AND INSTALLATION.
- SIGN VENDOR TO VERIFY FIELD CONDITIONS AND MEASUREMENTS.

COLOR SCHEDULE

- P1 - PMS WHITE C, Matte
- P2 - PMS 6129C, Matte
- P3 - PMS 630C, Matte
- 4 - PMS 7546C, Matte
- 5 - PMS 5635C, Matte
- P5 - MPC 31846, Onyx, Eggshell



WF02: SIDE A (NORTH FACE) REMOVE - REPLACE AT 90°



WF02: SIDE A (SOUTH FACE) REMOVE - REPLACE AT 90°

1	WF02: ELEVATION	EXTERIOR SIGN PACKAGE: VEHICULAR WAYFINDING	---
	MATERIALS: SEE FOLLOWING PAGES	3/4" = 1' - 0"	---
	VERIFY MEASUREMENTS PRIOR TO FABRICATION/INSTALLATION		

2	WF02: SIDE VIEW	EXTERIOR SIGN PACKAGE: VEHICULAR WAYFINDING	---
		3/4" = 1' - 0"	---

ORIGINAL DRAWING ON 11" X 17" SHEET



- 1 WF05: ELEVATION EXTERIOR SIGN PACKAGE: VEHICULAR WAYFINDING ---
MATERIALS: SEE FOLLOWING PAGES 3/4" = 1' - 0" ---
VERIFY MEASUREMENTS PRIOR TO FABRICATION/INSTALLATION



- 2 WF05: SIDE A (EAST FACE) EXISTING ---
MATERIALS: --- SCALE: NTS ---



CONSTRUCTION DOCUMENTATION

Anderson Hills Church
7514 Forest Rd - Cincinnati, OH 45255

WF05: VEHICULAR WAYFINDING
EXTERIOR SIGN PACKAGE

DATE
11.21.2024

WF05.00

ORIGINAL DRAWING ON 11" X 17" SHEET



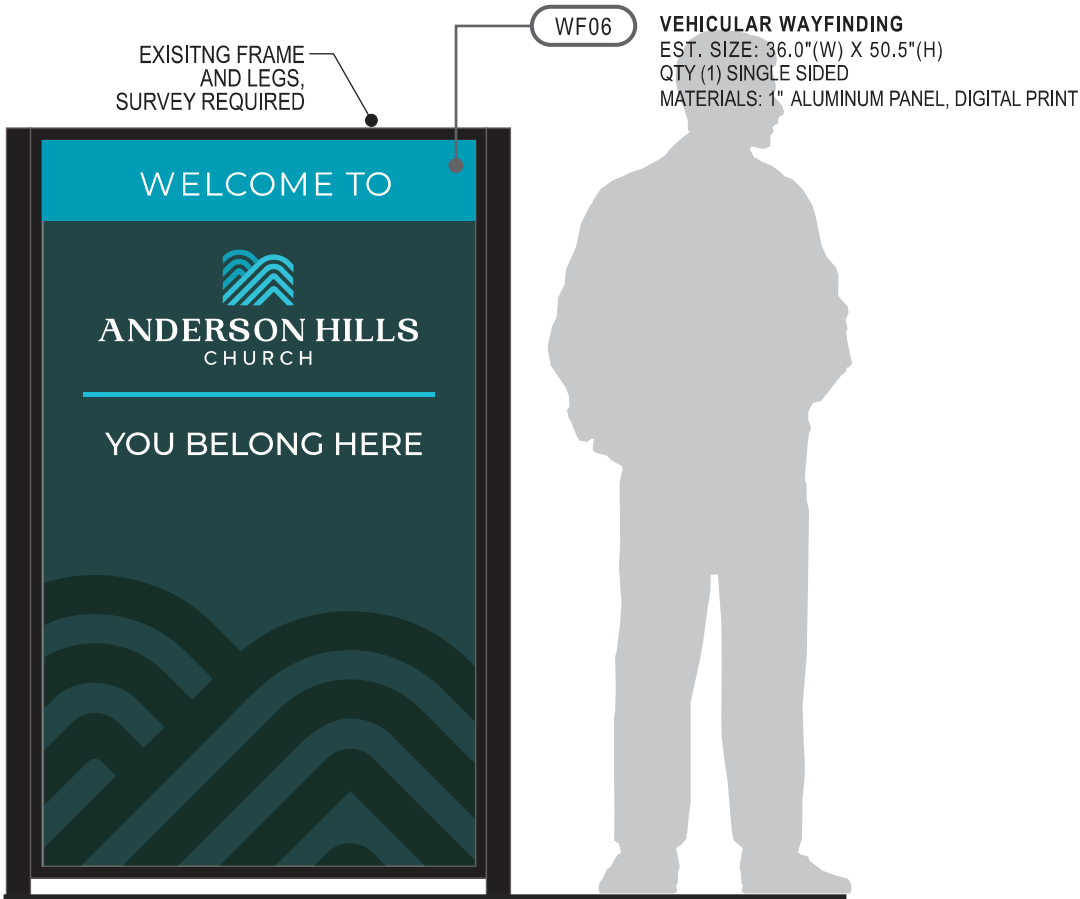
GENERAL NOTES

1. EXISTING POST AND PANEL STRUCTURE TO BE REFURBISHED WITH NEW PANEL AND DIGITAL PRINT GRAPHICS
2. SIGN VENDOR TO SUBMIT SAMPLE FOR CREATIVE APPROVAL PRIOR TO FABRICATION AND INSTALLATION.
3. SIGN VENDOR TO VERIFY FIELD CONDITIONS AND MEASUREMENTS.

COLOR SCHEDULE

- P1— PMS WHITE C, Matte
- P2— PMS 6129C, Matte
- P3— PMS 630C, Matte
- 4— PMS 7546C, Matte
- 5— PMS 5635C, Matte
- P5— MPC 31846, Onyx, Eggshell

updated
5-28-25



- 1 WF06: ELEVATION EXTERIOR SIGN PACKAGE: EXTERIOR ID ---
MATERIALS: SEE FOLLOWING PAGES 3/4" = 1' - 0" ---
VERIFY MEASUREMENTS PRIOR TO FABRICATION/INSTALLATION



NOT EXISTING LOCATION
SHOWING STRUCTURE ONLY

- 2 WF06: SIDE A EXISTING ---
MATERIALS: --- SCALE: NTS ---



GENERAL NOTES

- 1. EXISTING POST AND PANEL STRUCTURE TO BE REFURBISHED WITH NEW PANEL AND DIGITAL PRINT GRAPHICS
- 2. SIGN VENDOR TO SUBMIT SAMPLE FOR CREATIVE APPROVAL PRIOR TO FABRICATION AND INSTALLATION.
- 3. SIGN VENDOR TO VERIFY FIELD CONDITIONS AND MEASUREMENTS.

COLOR SCHEDULE

- P1 - PMS WHITE C, Matte
- P2 - PMS 6129C, Matte
- P3 - PMS 630C, Matte
- 4 - PMS 7546C, Matte
- 5 - PMS 5635C, Matte



1 WF06: ELEVATION & SIDE
MATERIALS: ---
VERIFY MEASUREMENTS PRIOR TO FABRICATION/INSTALLATION
EXTERIOR SIGN PACKAGE: PEDESTRIAN DIRECTIONAL
1" = 1' - 0"

updated
5-28-25

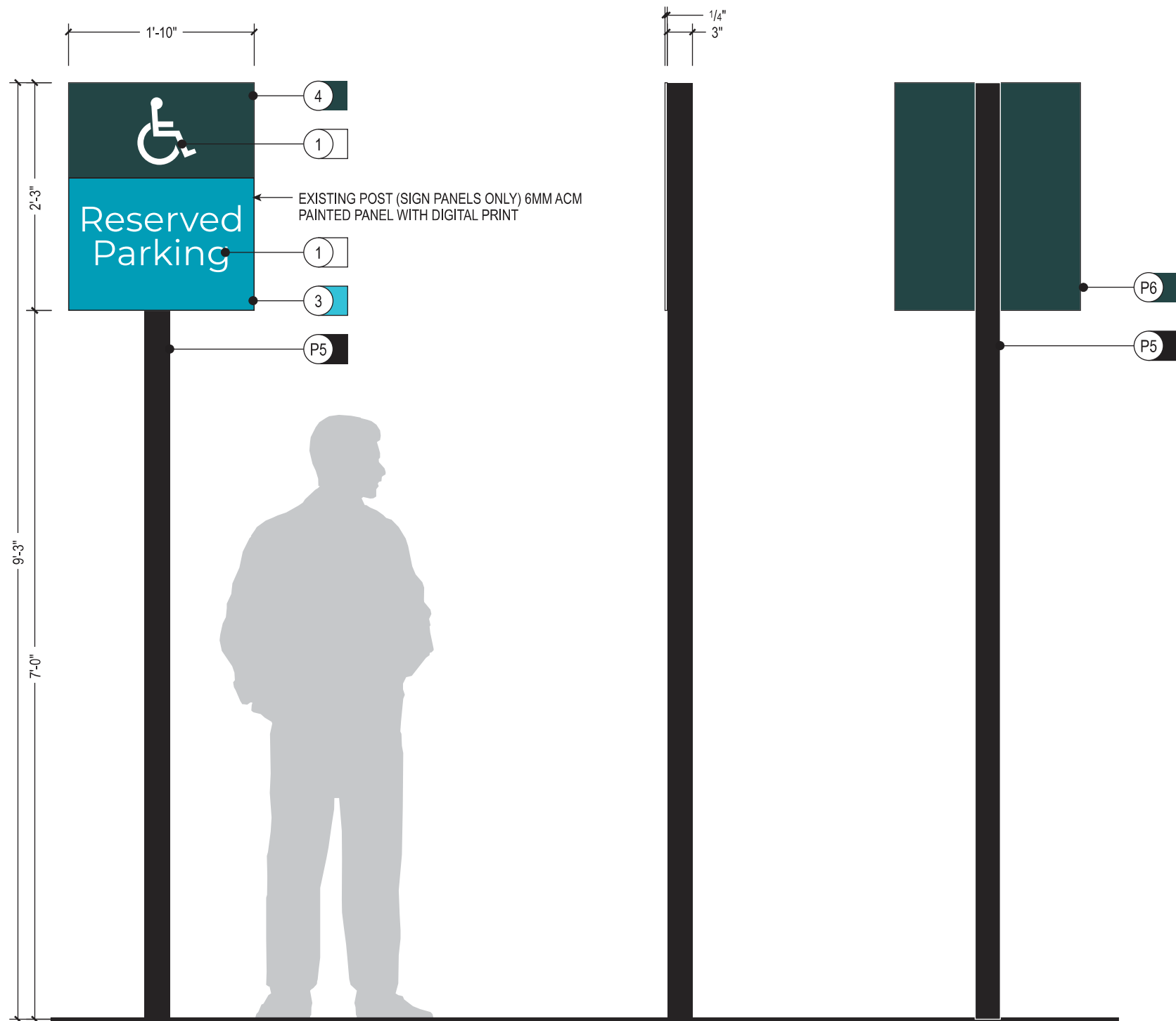
WF06: TERTIARY ID
EXTERIOR SIGN PACKAGE

DATE
11.21.2024

CONSTRUCTION DOCUMENTATION
Anderson Hills Church
7514 Forest Rd - Cincinnati, OH 45255

WF06.01

ORIGINAL DRAWING ON 11" X 17" SHEET



1 WF07: ELEVATION
MATERIALS: --
VERIFY MEASUREMENTS PRIOR TO FABRICATION/INSTALLATION

EXTERIOR SIGN PACKAGE: VEHICULAR WAYFINDING
3/4" = 1' - 0"

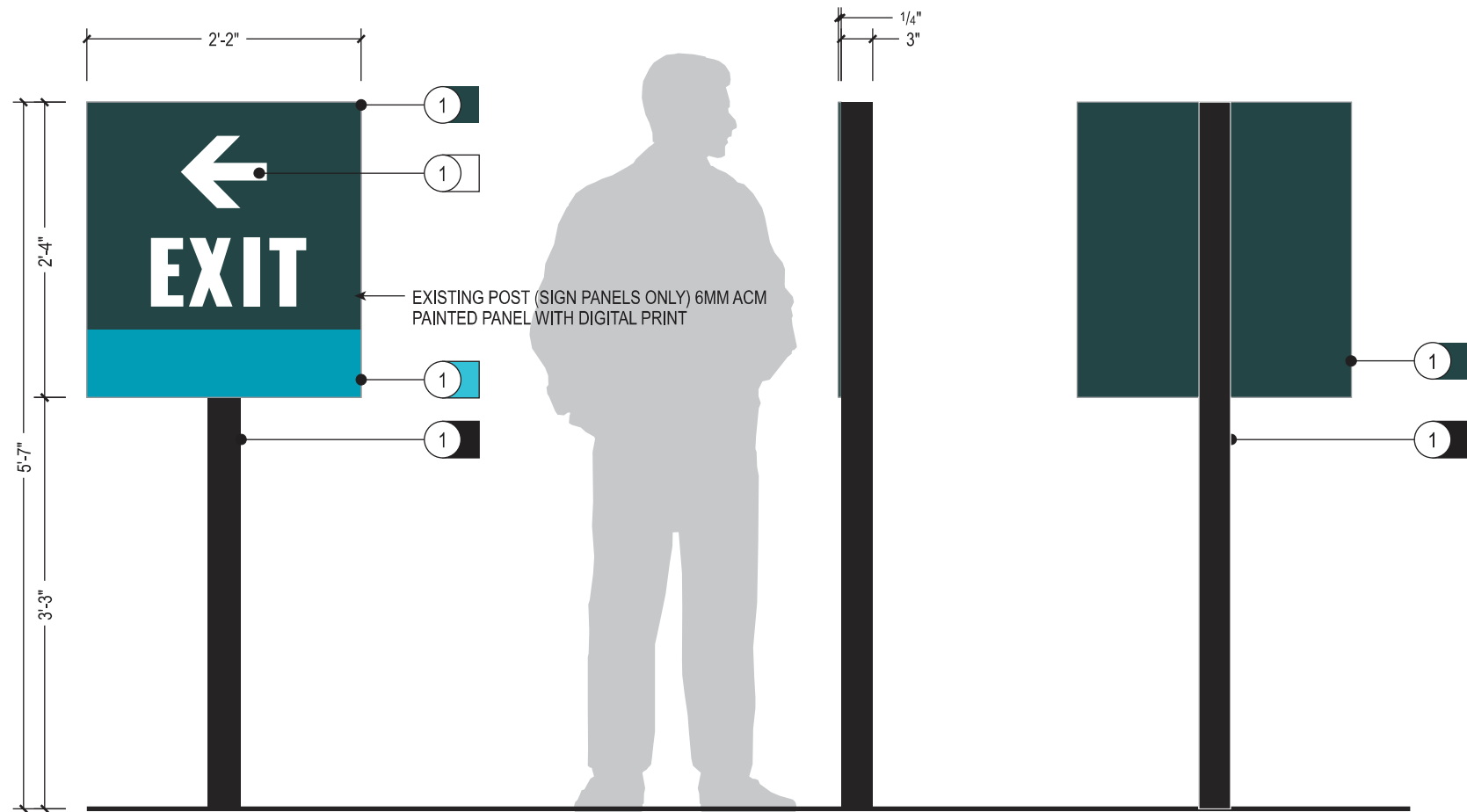
GENERAL NOTES

1. PAINTED ALUMINUM POST AND PANEL SIGN, FACE TO BE DIGITAL PRINT GRAPHICS ON RETRO REFLECTIVE VINYL APPLIED TO PANEL
2. SIGN VENDOR TO SUBMIT SAMPLE FOR CREATIVE APPROVAL PRIOR TO FABRICATION AND INSTALLATION.
3. SIGN VENDOR TO VERIFY FIELD CONDITIONS AND MEASUREMENTS.
4. SIGN VENDOR TO VEIRFY CODE FOR MATERIAL AND INSTALLATION REQUIREMENTS

COLOR SCHEDULE

- 1 — PMS White C, Matte
- 3 — PMS 6053C, Semi-gloss
- 4 — PMS 7507C, Semi-gloss
- P5 — PMS 6053C, Semi-gloss
- P6 — PMS 7507C, Semi-gloss

ORIGINAL DRAWING ON 11" X 17" SHEET



1 WF03: ELEVATION AND SIDE
MATERIALS: --
VERIFY MEASUREMENTS PRIOR TO FABRICATION/INSTALLATION

EXTERIOR SIGN PACKAGE: VEHICULAR WAYFINDING
3/4" = 1' - 0"

GENERAL NOTES

1. PAINTED ALUMINUM POST AND PANEL SIGN, FACE TO BE DIGITAL PRINT GRAPHICS APPLIED TO PANEL
2. SIGN VENDOR TO SUBMIT SAMPLE FOR CREATIVE APPROVAL PRIOR TO FABRICATION AND INSTALLATION.
3. SIGN VENDOR TO VERIFY FIELD CONDITIONS AND MEASUREMENTS.
4. SIGN VENDOR TO VEIRFY CODE FOR MATERIAL AND INSTALLATION REQUIREMENTS

COLOR SCHEDULE

- P1 – PMS WHITE C, Matte
- P3 – PMS 630C, Matte
- 4 – PMS 7546C, Matte
- P5 – MP31846, Onyx, Eggshell

CONSTRUCTION DOCUMENTATION

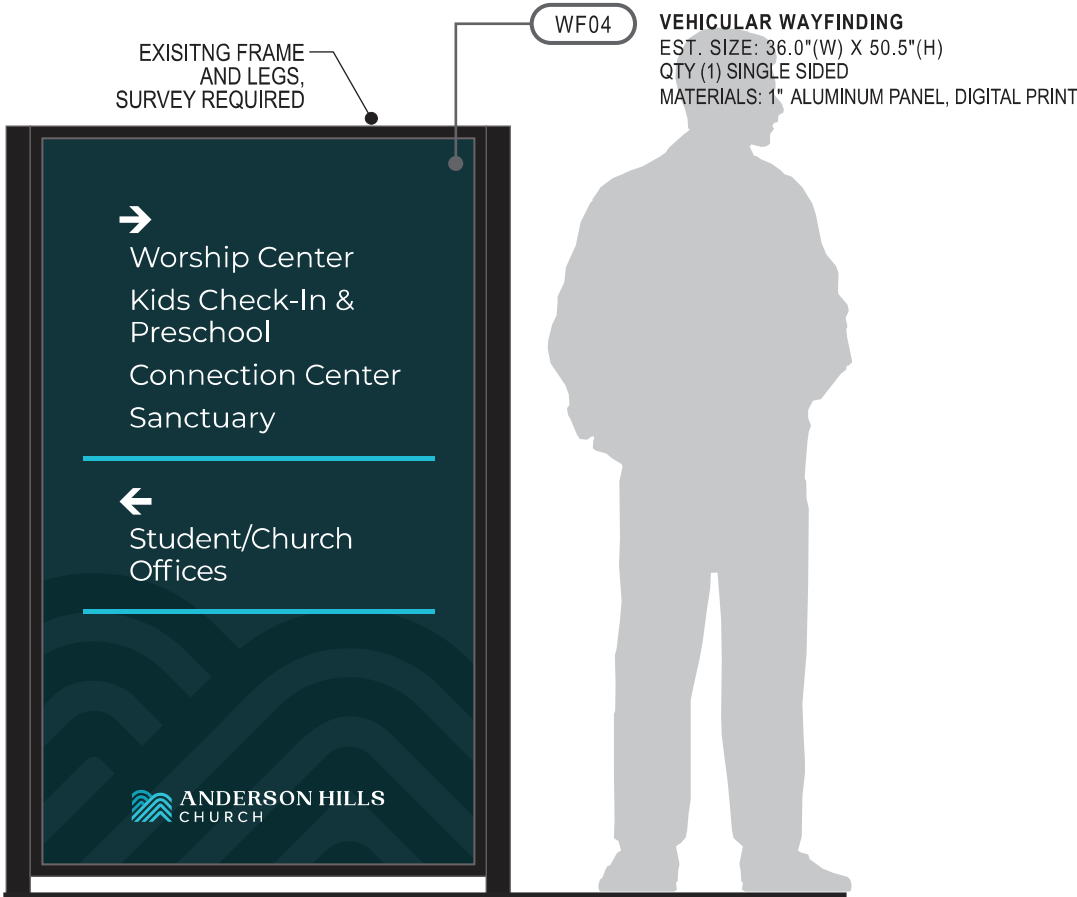
Anderson Hills Church
7514 Forest Rd - Cincinnati, OH 45255

WF07, WF03: VEHICULAR WAYFINDING
EXTERIOR SIGN PACKAGE

DATE
11.21.2024

EW07

updated
5-28-25



- ① WF04: ELEVATION EXTERIOR SIGN PACKAGE: PEDESTRIAN DIRECTIONAL ---
MATERIALS: --- 3/4" = 1' - 0" ---
VERIFY MEASUREMENTS PRIOR TO FABRICATION/INSTALLATION



- ② WF04: SIDE A EXISTING ---
MATERIALS: --- SCALE: NTS ---

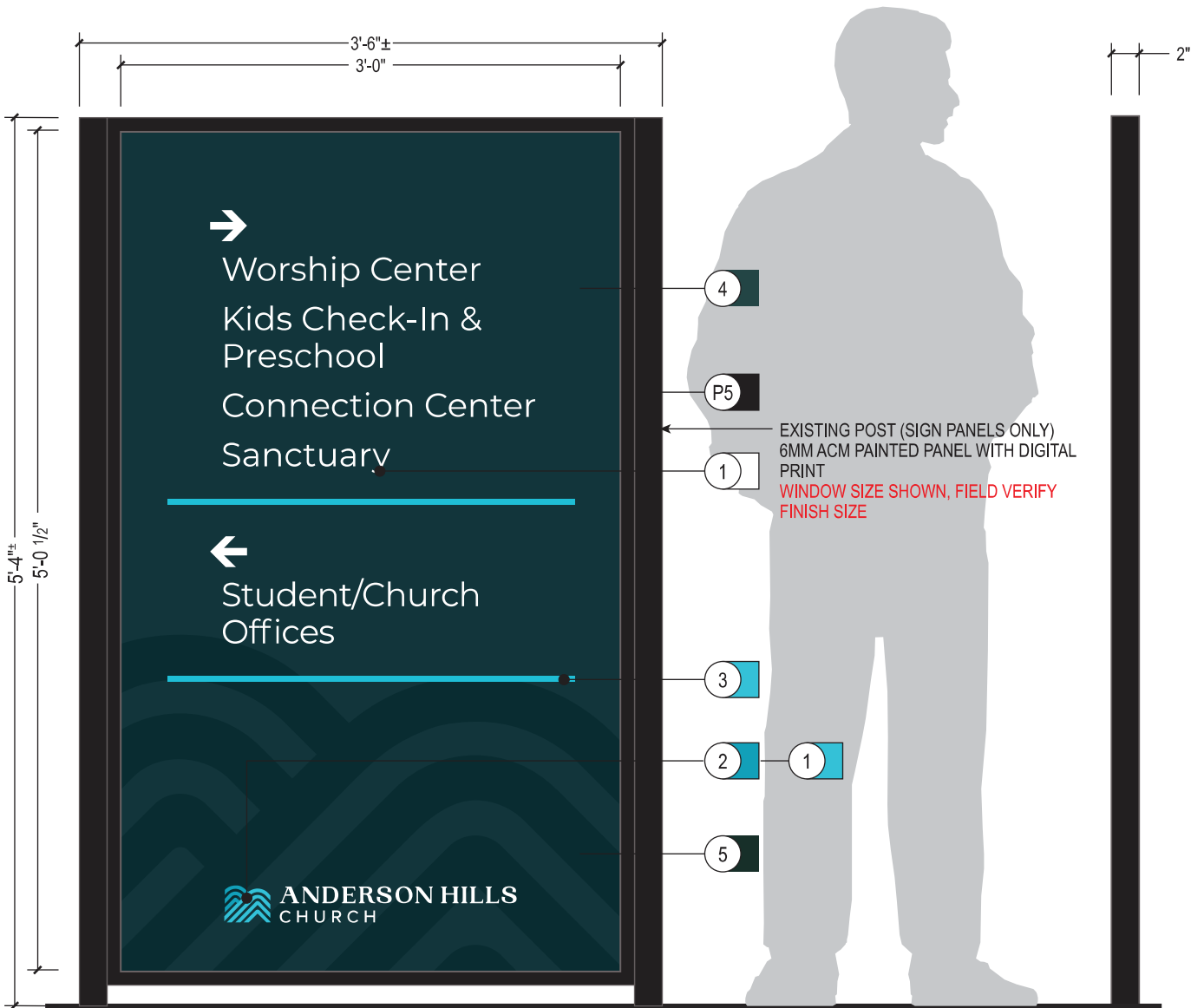


GENERAL NOTES

- EXISTING POST AND PANEL STRUCTURE TO BE REFURBISHED WITH NEW PANEL AND DIGITAL PRINT GRAPHICS
- SIGN VENDOR TO SUBMIT SAMPLE FOR CREATIVE APPROVAL PRIOR TO FABRICATION AND INSTALLATION.
- SIGN VENDOR TO VERIFY FIELD CONDITIONS AND MEASUREMENTS.

COLOR SCHEDULE

- P1 - PMS WHITE C, Matte
- P2 - PMS 6129C, Matte
- P3 - PMS 630C, Matte
- 4 - PMS 7546C, Matte
- 5 - PMS 5635C, Matte
- P5 - MPC 31846, Onyx, Eggshell



1 WF04: ELEVATION & SIDE
MATERIALS: ---
VERIFY MEASUREMENTS PRIOR TO FABRICATION/INSTALLATION

EXTERIOR SIGN PACKAGE: PEDESTRIAN DIRECTIONAL ---
1" = 1' - 0" ---

updated
5-28-25